

# Anti-NFRKB Antibody

Rabbit polyclonal antibody to NFRKB

Catalog # AP59639

## Product Information

---

<b>Application</b>	WB
<b>Primary Accession</b>	<a href="#">Q6P4R8</a>
<b>Reactivity</b>	Human, Monkey
<b>Host</b>	Rabbit
<b>Clonality</b>	Polyclonal
<b>Calculated MW</b>	139001

## Additional Information

---

<b>Gene ID</b>	4798
<b>Other Names</b>	INO80G; Nuclear factor related to kappa-B-binding protein; DNA-binding protein R kappa-B; INO80 complex subunit G
<b>Target/Specificity</b>	Recognizes endogenous levels of NFRKB protein.
<b>Dilution</b>	WB~~WB (1/500 - 1/1000)
<b>Format</b>	Liquid in 0.42% Potassium phosphate, 0.87% Sodium chloride, pH 7.3, 30% glycerol, and 0.09% (W/V) sodium azide.
<b>Storage</b>	Store at -20 °C.Stable for 12 months from date of receipt

## Protein Information

---

<b>Name</b>	NFRKB
<b>Synonyms</b>	INO80G
<b>Function</b>	Binds to the DNA consensus sequence 5'-GGGGAATCTCC-3'.
<b>Cellular Location</b>	Nucleus.
<b>Tissue Location</b>	Expressed in thymus, brain, testes, spleen and liver.

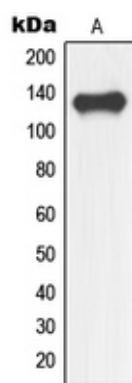
## Background

---

KLH-conjugated synthetic peptide encompassing a sequence within the center region of human NFRKB. The exact sequence is proprietary.

## Images

---



Western blot analysis of NFRKB expression in human fetal brain (A) whole cell lysates.

Please note: All products are 'FOR RESEARCH USE ONLY. NOT FOR USE IN DIAGNOSTIC OR THERAPEUTIC PROCEDURES'.