

C1orf186 Antibody (C-term)

Affinity Purified Rabbit Polyclonal Antibody (Pab)

Catalog # AP5963b

Product Information

Application	WB, IHC-P, E
Primary Accession	Q6ZWK4
Other Accession	NP_001007545.1
Reactivity	Human
Host	Rabbit
Clonality	Polyclonal
Isotype	Rabbit IgG
Clone Names	RB27426
Calculated MW	19405
Antigen Region	121-150

Additional Information

Gene ID	440712
Other Names	Uncharacterized protein C1orf186, C1orf186
Target/Specificity	This C1orf186 antibody is generated from rabbits immunized with a KLH conjugated synthetic peptide between 121-150 amino acids from the C-terminal region of human C1orf186.
Dilution	WB~~1:1000 IHC-P~~1:100~500 E~~Use at an assay dependent concentration.
Format	Purified polyclonal antibody supplied in PBS with 0.05% (V/V) Proclin 300. This antibody is purified through a protein A column, followed by peptide affinity purification.
Storage	Maintain refrigerated at 2-8°C for up to 2 weeks. For long term storage store at -20°C in small aliquots to prevent freeze-thaw cycles.
Precautions	C1orf186 Antibody (C-term) is for research use only and not for use in diagnostic or therapeutic procedures.

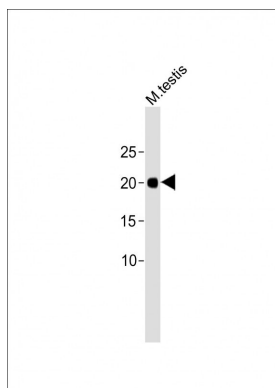
Protein Information

Name	RHEX (HGNC:25341)
Function	Acts as a signaling transduction factor of the EPO-EPOR signaling pathway promoting erythroid cell differentiation (PubMed: 25092874).
Cellular Location	Cell membrane; Single-pass membrane protein

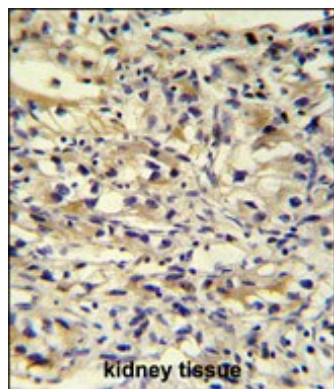
Tissue Location

Expressed in the proerythroblasts (at protein level) (PubMed:25092874). Expressed strongly in the kidney (PubMed:25092874). Expressed weakly in the pancreas, liver and lung (PubMed:25092874). Expressed strongly in erythroid progenitor cells (EPCs) (PubMed:25092874). Expressed weakly in T-cells and neutrophils (PubMed:25092874).

Images



All lanes: Anti-C1orf186 Antibody (C-term) at 1:2000 dilution + Mouse testis lysate Lysates/proteins at 20 µg per lane. Secondary: Goat Anti-Rabbit IgG, (H+L), Peroxidase conjugated (ASP1615) at 1/15000 dilution. Observed band size: 19 KDa Blocking/Dilution buffer: 5% NFDM/TBST.



C1orf186 antibody (C-term) (Cat. #AP5963b) immunohistochemistry analysis in formalin fixed and paraffin embedded human kidney tissue followed by peroxidase conjugation of the secondary antibody and DAB staining. This data demonstrates the use of the C1orf186 antibody (C-term) for immunohistochemistry. Clinical relevance has not been evaluated.

Please note: All products are 'FOR RESEARCH USE ONLY. NOT FOR USE IN DIAGNOSTIC OR THERAPEUTIC PROCEDURES'.