

# Anti-NSF Antibody

Rabbit polyclonal antibody to NSF  
Catalog # AP59643

## Product Information

---

Application	WB
Primary Accession	<a href="#">P46459</a>
Other Accession	<a href="#">P46460</a>
Reactivity	Human, Mouse, Rat
Host	Rabbit
Clonality	Polyclonal
Calculated MW	82594

## Additional Information

---

Gene ID	4905
Other Names	Vesicle-fusing ATPase; N-ethylmaleimide-sensitive fusion protein; NEM-sensitive fusion protein; Vesicular-fusion protein NSF
Target/Specificity	KLH-conjugated synthetic peptide encompassing a sequence within the center region of human NSF. The exact sequence is proprietary.
Dilution	WB~~WB (1/500 - 1/1000)
Format	Liquid in 0.42% Potassium phosphate, 0.87% Sodium chloride, pH 7.3, 30% glycerol, and 0.09% (W/V) sodium azide.
Storage	Store at -20 °C.Stable for 12 months from date of receipt

## Protein Information

---

Name	NSF
Function	Required for vesicle-mediated transport. Catalyzes the fusion of transport vesicles within the Golgi cisternae. Is also required for transport from the endoplasmic reticulum to the Golgi stack. Seems to function as a fusion protein required for the delivery of cargo proteins to all compartments of the Golgi stack independent of vesicle origin. Interaction with AMPAR subunit GRIA2 leads to influence GRIA2 membrane cycling (By similarity).
Cellular Location	Cytoplasm.

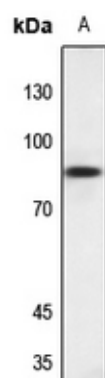
## Background

---

KLH-conjugated synthetic peptide encompassing a sequence within the center region of human NSF. The exact sequence is proprietary.

## Images

---



Western blot analysis of NSF expression in HGC27 (A) whole cell lysates.

Please note: All products are 'FOR RESEARCH USE ONLY. NOT FOR USE IN DIAGNOSTIC OR THERAPEUTIC PROCEDURES'.