

Anti-OCRL Antibody

Rabbit polyclonal antibody to OCRL

Catalog # AP59647

Product Information

Application	WB
Primary Accession	Q01968
Reactivity	Human, Monkey
Host	Rabbit
Clonality	Polyclonal
Calculated MW	104205

Additional Information

Gene ID	4952
Other Names	INPP5F; OCRL1; Inositol polyphosphate 5-phosphatase OCRL-1; Lowe oculocerebrorenal syndrome protein
Target/Specificity	Recognizes endogenous levels of OCRL protein.
Dilution	WB~~WB (1/500 - 1/1000)
Format	Liquid in 0.42% Potassium phosphate, 0.87% Sodium chloride, pH 7.3, 30% glycerol, and 0.09% (W/V) sodium azide.
Storage	Store at -20 °C.Stable for 12 months from date of receipt

Protein Information

Name	OCRL (HGNC:8108)
Synonyms	OCRL1 {ECO:0000303 Ref.2}
Function	<p>Catalyzes the hydrolysis of the 5-position phosphate of phosphatidylinositol 4,5-bisphosphate (PtdIns(4,5)P2) and phosphatidylinositol-3,4,5-bisphosphate (PtdIns(3,4,5)P3), with the greatest catalytic activity towards PtdIns(4,5)P2 (PubMed:10764818, PubMed:15474001, PubMed:7761412, PubMed:9430698). Able also to hydrolyze the 5-phosphate of inositol 1,4,5-trisphosphate and of inositol 1,3,4,5-tetrakisphosphate (PubMed:25869668, PubMed:7761412). Regulates traffic in the endosomal pathway by regulating the specific pool of phosphatidylinositol 4,5-bisphosphate that is associated with endosomes (PubMed:21971085). Involved in primary cilia assembly (PubMed:22228094, PubMed:22543976). Acts as a regulator of phagocytosis, hydrolyzing PtdIns(4,5)P2 to promote phagosome closure, through attenuation of PI3K signaling (PubMed:22072788).</p>

Cellular Location

Cytoplasmic vesicle, phagosome membrane {ECO:0000250|UniProtKB:D3ZGS3}. Early endosome membrane. Membrane, clathrin-coated pit. Cell projection, cilium, photoreceptor outer segment. Cell projection, cilium. Cytoplasmic vesicle {ECO:0000250|UniProtKB:D3ZGS3}. Endosome. Golgi apparatus, trans-Golgi network {ECO:0000250|UniProtKB:D3ZGS3}. Lysosome Note=Also found on macropinosomes (PubMed:25869668). Colocalized with APPL1 on phagosomes (PubMed:22072788).

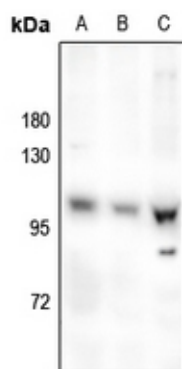
Tissue Location

Brain, skeletal muscle, heart, kidney, lung, placenta and fibroblasts. Expressed in the retina and the retinal pigment epithelium.

Background

KLH-conjugated synthetic peptide encompassing a sequence within the center region of human OCRL. The exact sequence is proprietary.

Images



Western blot analysis of OCRL expression in MG63 (A), A549 (B), HEK293T (C) whole cell lysates.

Please note: All products are 'FOR RESEARCH USE ONLY. NOT FOR USE IN DIAGNOSTIC OR THERAPEUTIC PROCEDURES'.