

Anti-PAI2 Antibody

Rabbit polyclonal antibody to PAI2

Catalog # AP59650

Product Information

Application	WB
Primary Accession	P05120
Reactivity	Human, Mouse, Rat
Host	Rabbit
Clonality	Polyclonal
Calculated MW	46596

Additional Information

Gene ID	5055
Other Names	PAI2; PLANH2; Plasminogen activator inhibitor 2; PAI-2; Monocyte Arg-serpin; Placental plasminogen activator inhibitor; Serpin B2; Urokinase inhibitor
Target/Specificity	KLH-conjugated synthetic peptide encompassing a sequence within the center region of human PAI2. The exact sequence is proprietary.
Dilution	WB~~WB (1/500 - 1/1000)
Format	Liquid in 0.42% Potassium phosphate, 0.87% Sodium chloride, pH 7.3, 30% glycerol, and 0.09% (W/V) sodium azide.
Storage	Store at -20 °C.Stable for 12 months from date of receipt

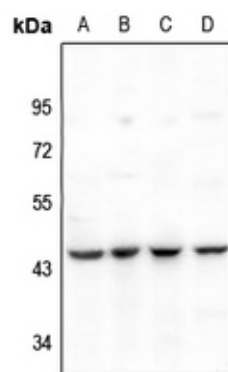
Protein Information

Name	SERPINB2
Synonyms	PAI2, PLANH2
Function	Inhibits urokinase-type plasminogen activator. The monocyte derived PAI-2 is distinct from the endothelial cell-derived PAI-1.
Cellular Location	Cytoplasm. Secreted, extracellular space.

Background

KLH-conjugated synthetic peptide encompassing a sequence within the center region of human PAI2. The exact sequence is proprietary.

Images



Western blot analysis of PAI2 expression in DLD (A), EC9706 (B), 3T3L1 (C), C6 (D) whole cell lysates.

Please note: All products are 'FOR RESEARCH USE ONLY. NOT FOR USE IN DIAGNOSTIC OR THERAPEUTIC PROCEDURES'.