

Anti-Pepsinogen C Antibody

Rabbit polyclonal antibody to Pepsinogen C
Catalog # AP59659

Product Information

Application	WB, IHC
Primary Accession	P20142
Other Accession	Q9D7R7
Reactivity	Human, Mouse, Rat
Host	Rabbit
Clonality	Polyclonal
Calculated MW	42426

Additional Information

Gene ID	5225
Other Names	Gastricsin; Pepsinogen C
Target/Specificity	KLH-conjugated synthetic peptide encompassing a sequence within the center region of human Pepsinogen C. The exact sequence is proprietary.
Dilution	WB~~WB (1/500 - 1/1000), IHC (1/100 - 1/200) IHC~~WB (1/500 - 1/1000), IHC (1/100 - 1/200)
Format	Liquid in 0.42% Potassium phosphate, 0.87% Sodium chloride, pH 7.3, 30% glycerol, and 0.09% (W/V) sodium azide.
Storage	Store at -20 °C.Stable for 12 months from date of receipt

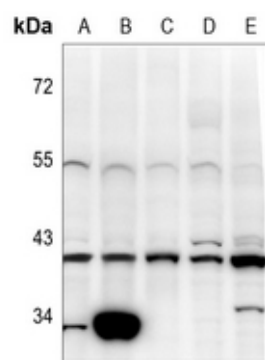
Protein Information

Name	PGC
Function	Hydrolyzes a variety of proteins.
Cellular Location	Secreted.

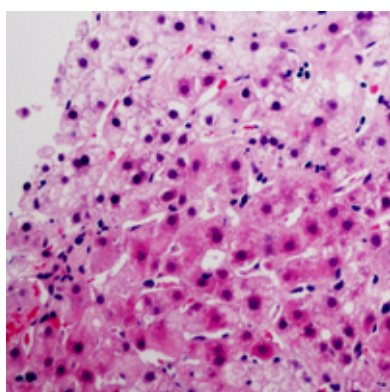
Background

KLH-conjugated synthetic peptide encompassing a sequence within the center region of human Pepsinogen C. The exact sequence is proprietary.

Images



Western blot analysis of Pepsinogen C expression in HepG2 (A), LO2 (B), SGC7901 (C), AML12 (D), PC12 (E) whole cell lysates.



Immunohistochemical analysis of Pepsinogen C staining in human liver cancer formalin fixed paraffin embedded tissue section. The section was pre-treated using heat mediated antigen retrieval with sodium citrate buffer (pH 6.0). The section was then incubated with the antibody at room temperature and detected using an HRP conjugated compact polymer system. AEC was used as the chromogen. The section was then counterstained with haematoxylin and mounted with DPX.

Please note: All products are 'FOR RESEARCH USE ONLY. NOT FOR USE IN DIAGNOSTIC OR THERAPEUTIC PROCEDURES'.