

# Anti-PHKG1 Antibody

Rabbit polyclonal antibody to PHKG1

Catalog # AP59661

## Product Information

---

Application	WB
Primary Accession	<a href="#">Q16816</a>
Other Accession	<a href="#">P07934</a>
Reactivity	Human, Mouse, Rat
Host	Rabbit
Clonality	Polyclonal
Calculated MW	45024

## Additional Information

---

Gene ID	5260
Other Names	PHKG; Phosphorylase b kinase gamma catalytic chain, skeletal muscle/heart isoform; PHK-gamma-M; Phosphorylase kinase subunit gamma-1; Serine/threonine-protein kinase PHKG1
Target/Specificity	Recognizes endogenous levels of PHKG1 protein.
Dilution	WB~~WB (1/500 - 1/1000)
Format	Liquid in 0.42% Potassium phosphate, 0.87% Sodium chloride, pH 7.3, 30% glycerol, and 0.09% (W/V) sodium azide.
Storage	Store at -20 °C.Stable for 12 months from date of receipt

## Protein Information

---

Name	PHKG1
Synonyms	PHKG
Function	Catalytic subunit of the phosphorylase b kinase (PHK), which mediates the neural and hormonal regulation of glycogen breakdown (glycogenolysis) by phosphorylating and thereby activating glycogen phosphorylase. In vitro, phosphorylates PYGM, TNNI3, MAPT/TAU, GAP43 and NRGN/RC3 (By similarity).

## Background

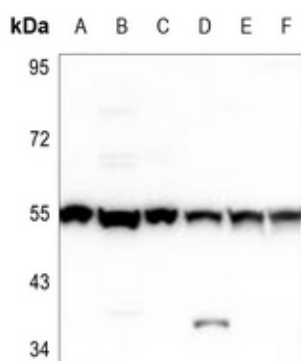
---

KLH-conjugated synthetic peptide encompassing a sequence within the center region of human PHKG1. The

exact sequence is proprietary.

## Images

---



Western blot analysis of PHKG1 expression in SHSY5Y (A), EC9706 (B), HCT116 (C), H9C2 (D), BV2 (E), rat brain (F) whole cell lysates.

Please note: All products are 'FOR RESEARCH USE ONLY. NOT FOR USE IN DIAGNOSTIC OR THERAPEUTIC PROCEDURES'.