

# Anti-PLC gamma 1 Antibody

Rabbit polyclonal antibody to PLC gamma 1  
Catalog # AP59664

## Product Information

|                   |                                   |
|-------------------|-----------------------------------|
| Application       | WB, IHC                           |
| Primary Accession | <a href="#">P19174</a>            |
| Other Accession   | <a href="#">Q62077</a>            |
| Reactivity        | Human, Mouse, Rat, Monkey, Bovine |
| Host              | Rabbit                            |
| Clonality         | Polyclonal                        |
| Calculated MW     | 148532                            |

## Additional Information

|                    |   |
|--------------------|---|
| Gene ID            | 5335  |
| Other Names        | PLC1; 1-phosphatidylinositol 4, 5-bisphosphate phosphodiesterase gamma-1; PLC-148; Phosphoinositide phospholipase C-gamma-1; Phospholipase C-II; PLC-II; Phospholipase C-gamma-1; PLC-gamma-1 |
| Target/Specificity | KLH-conjugated synthetic peptide encompassing a sequence within the center region of human PLC gamma 1. The exact sequence is proprietary.  |
| Dilution           | WB~~WB (1/500 - 1/1000), IHC (1/100 - 1/200) IHC~~WB (1/500 - 1/1000), IHC (1/100 - 1/200)  |
| Format             | Liquid in 0.42% Potassium phosphate, 0.87% Sodium chloride, pH 7.3, 30% glycerol, and 0.09% (W/V) sodium azide.   |
| Storage            | Store at -20 °C.Stable for 12 months from date of receipt   |

## Protein Information

|          |   |
|----------|---|
| Name     | PLCG1 ( <a href="#">HGNC:9065</a> )   |
| Synonyms | PLC1  |
| Function | Mediates the production of the second messenger molecules diacylglycerol (DAG) and inositol 1,4,5-trisphosphate (IP3). Plays an important role in the regulation of intracellular signaling cascades. Becomes activated in response to ligand-mediated activation of receptor-type tyrosine kinases, such as PDGFRA, PDGFRB, EGFR, FGFR1, FGFR2, FGFR3 and FGFR4 (By similarity). Plays a role in actin reorganization and cell migration (PubMed: <a href="#">17229814</a> ). Guanine nucleotide exchange factor that binds the GTPase DNM1 and catalyzes the dissociation of GDP, allowing a GTP molecule to bind in its place, therefore enhancing DNM1-dependent endocytosis (By similarity). |

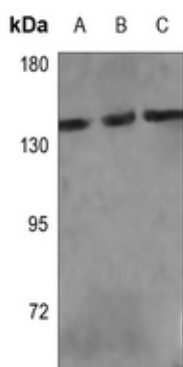
## Cellular Location

Cell projection, lamellipodium. Cell projection, ruffle. Note= Rapidly redistributed to ruffles and lamellipodia structures in response to epidermal growth factor (EGF) treatment.

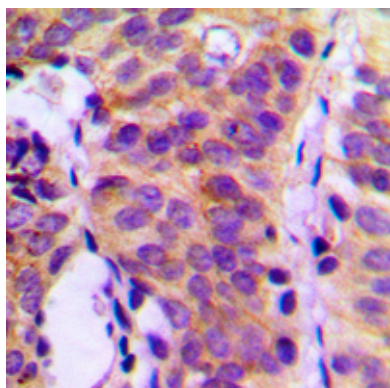
## Background

KLH-conjugated synthetic peptide encompassing a sequence within the center region of human PLC gamma 1. The exact sequence is proprietary.

## Images



Western blot analysis of PLC gamma 1 expression in DLD (A), U2OS (B), rat testis (C) whole cell lysates.



Immunohistochemical analysis of PLC gamma 1 staining in human breast cancer formalin fixed paraffin embedded tissue section. The section was pre-treated using heat mediated antigen retrieval with sodium citrate buffer (pH 6.0). The section was then incubated with the antibody at room temperature and detected using an HRP conjugated compact polymer system. DAB was used as the chromogen. The section was then counterstained with haematoxylin and mounted with DPX.

Please note: All products are 'FOR RESEARCH USE ONLY. NOT FOR USE IN DIAGNOSTIC OR THERAPEUTIC PROCEDURES'.