

# KIAA1688 Antibody (C-term)

Affinity Purified Rabbit Polyclonal Antibody (Pab)

Catalog # AP5966b

## Product Information

---

<b>Application</b>	IF, WB, FC, E
<b>Primary Accession</b>	<a href="#">Q9C0H5</a>
<b>Other Accession</b>	<a href="#">P59281</a> , <a href="#">NP_079527.1</a>
<b>Reactivity</b>	Human, Mouse
<b>Host</b>	Rabbit
<b>Clonality</b>	Polyclonal
<b>Isotype</b>	Rabbit IgG
<b>Clone Names</b>	RB27445
<b>Calculated MW</b>	121286
<b>Antigen Region</b>	852-880

## Additional Information

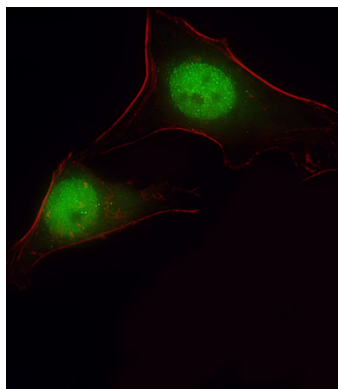
---

<b>Gene ID</b>	80728
<b>Other Names</b>	Rho GTPase-activating protein 39, ARHGAP39, KIAA1688
<b>Target/Specificity</b>	This KIAA1688 antibody is generated from rabbits immunized with a KLH conjugated synthetic peptide between 852-880 amino acids from the C-terminal region of human KIAA1688.
<b>Dilution</b>	IF~~1:25 WB~~1:2000 FC~~1:25 E~~Use at an assay dependent concentration.
<b>Format</b>	Purified polyclonal antibody supplied in PBS with 0.09% (W/V) sodium azide. This antibody is purified through a protein A column, followed by peptide affinity purification.
<b>Storage</b>	Maintain refrigerated at 2-8°C for up to 2 weeks. For long term storage store at -20°C in small aliquots to prevent freeze-thaw cycles.
<b>Precautions</b>	KIAA1688 Antibody (C-term) is for research use only and not for use in diagnostic or therapeutic procedures.

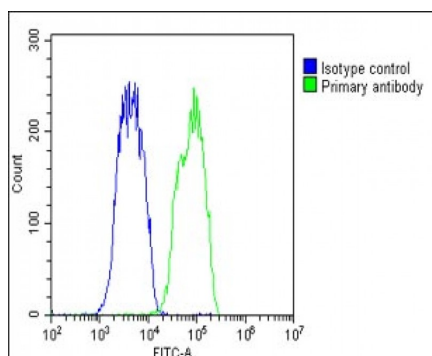
## Protein Information

---

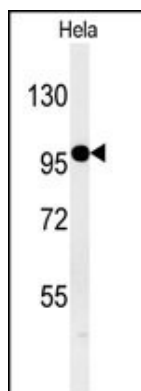
<b>Name</b>	ARHGAP39
<b>Synonyms</b>	KIAA1688
<b>Cellular Location</b>	Nucleus.



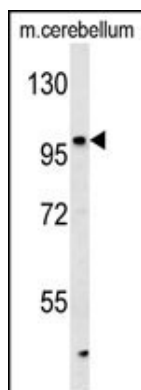
Immunofluorescent analysis of 4% paraformaldehyde-fixed, 0.1% Triton X-100 permeabilized HeLa cells labeling ARHGAP39 with AP5966b at 1/25 dilution, followed by DyLight® 488-conjugated goat anti-Rabbit IgG secondary antibody at 1/200 dilution (green). Immunofluorescence image showing Nucleus and Weak Cytoplasm staining on HeLa cell line. Cytoplasmic actin is detected with DyLight® 554 Phalloidin (red). The nuclear counter stain is DAPI (blue).



Overlay histogram showing HeLa cells stained with AP5966b (green line). The cells were fixed with 2% paraformaldehyde (10 min) and then permeabilized with 90% methanol for 10 min. The cells were then incubated in 2% bovine serum albumin to block non-specific protein-protein interactions followed by the antibody (AP5966b, 1:25 dilution) for 60 min at 37°C. The secondary antibody used was Goat-Anti-Rabbit IgG, DyLight® 488 Conjugated Highly Cross-Adsorbed (1583138) at 1/200 dilution for 40 min at 37°C. Isotype control antibody (blue line) was rabbit IgG1 (1 µg/1 × 10<sup>6</sup> cells) used under the same conditions. Acquisition of >10,000 events was performed.



KIAA1688 Antibody (C-term) (Cat. #AP5966b) western blot analysis in HeLa cell line lysates (15 µg/lane). This demonstrates the KIAA1688 antibody detected KIAA1688 protein (arrow).



KIAA1688 Antibody (C-term) (Cat. #AP5966b) western blot analysis in mouse cerebellum tissue lysates (15 µg/lane). This demonstrates the KIAA1688 antibody detected KIAA1688 protein (arrow).