

Anti-PRKX Antibody

Rabbit polyclonal antibody to PRKX

Catalog # AP59676

Product Information

Application	WB
Primary Accession	P51817
Other Accession	Q922R0
Reactivity	Human, Mouse, Rat
Host	Rabbit
Clonality	Polyclonal
Calculated MW	40896

Additional Information

Gene ID	5613
Other Names	PKX1; cAMP-dependent protein kinase catalytic subunit PRKX; PrKX; Protein kinase X; Protein kinase X-linked; Serine/threonine-protein kinase PRKX; Protein kinase PKX1
Target/Specificity	Recognizes endogenous levels of PRKX protein.
Dilution	WB~~WB (1/500 - 1/1000)
Format	Liquid in 0.42% Potassium phosphate, 0.87% Sodium chloride, pH 7.3, 30% glycerol, and 0.09% (W/V) sodium azide.
Storage	Store at -20 °C.Stable for 12 months from date of receipt

Protein Information

Name	PRKX
Synonyms	PKX1
Function	Serine/threonine protein kinase regulated by and mediating cAMP signaling in cells. Acts through phosphorylation of downstream targets that may include CREB, SMAD6 and PKD1 and has multiple functions in cellular differentiation and epithelial morphogenesis. Regulates myeloid cell differentiation through SMAD6 phosphorylation. Involved in nephrogenesis by stimulating renal epithelial cell migration and tubulogenesis. Also involved in angiogenesis through stimulation of endothelial cell proliferation, migration and vascular- like structure formation.
Cellular Location	Cytoplasm. Nucleus. Note=cAMP induces nuclear translocation

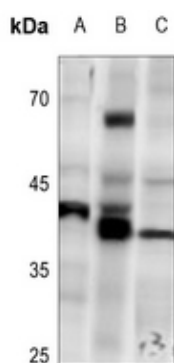
Tissue Location

Widely expressed (at protein level). Specifically expressed in blood by macrophages and granulocytes according to PubMed:9860982.

Background

KLH-conjugated synthetic peptide encompassing a sequence within the center region of human PRKX. The exact sequence is proprietary.

Images



Western blot analysis of PRKX expression in SP20 (A), EC9706 (B), HEK293T (C) whole cell lysates.

Please note: All products are 'FOR RESEARCH USE ONLY. NOT FOR USE IN DIAGNOSTIC OR THERAPEUTIC PROCEDURES'.