

Anti-Trypsin 1 Antibody

Rabbit polyclonal antibody to Trypsin 1

Catalog # AP59678

Product Information

Application	WB
Primary Accession	P07477
Reactivity	Human
Host	Rabbit
Clonality	Polyclonal
Calculated MW	26558

Additional Information

Gene ID	5644
Other Names	TRP1; TRY1; TRYP1; Trypsin-1; Beta-trypsin; Cationic trypsinogen; Serine protease 1; Trypsin I
Target/Specificity	KLH-conjugated synthetic peptide encompassing a sequence within the center region of human Trypsin 1. The exact sequence is proprietary.
Dilution	WB~~WB (1/500 - 1/1000)
Format	Liquid in 0.42% Potassium phosphate, 0.87% Sodium chloride, pH 7.3, 30% glycerol, and 0.09% (W/V) sodium azide.
Storage	Store at -20 °C.Stable for 12 months from date of receipt

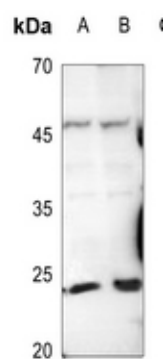
Protein Information

Name	PRSS1 (HGNC:9475)
Function	Has activity against the synthetic substrates Boc-Phe-Ser- Arg-Mec, Boc-Leu-Thr-Arg-Mec, Boc-Gln-Ala-Arg-Mec and Boc-Val-Pro-Arg- Mec. The single-chain form is more active than the two-chain form against all of these substrates.
Cellular Location	Secreted, extracellular space.

Background

KLH-conjugated synthetic peptide encompassing a sequence within the center region of human Trypsin 1. The exact sequence is proprietary.

Images



Western blot analysis of Trypsin 1 expression in Panc1 (A), HCT116 (B) whole cell lysates.

Please note: All products are 'FOR RESEARCH USE ONLY. NOT FOR USE IN DIAGNOSTIC OR THERAPEUTIC PROCEDURES'.