

# Anti-Trypsin 3 Antibody

Rabbit polyclonal antibody to Trypsin 3  
Catalog # AP59679

## Product Information

---

Application	WB
Primary Accession	<a href="#">P35030</a>
Reactivity	Human, Mouse
Host	Rabbit
Clonality	Polyclonal
Calculated MW	32529

## Additional Information

---

Gene ID	5646
Other Names	PRSS4; TRY3; TRY4; Trypsin-3; Brain trypsinogen; Mesotrypsinogen; Serine protease 3; Serine protease 4; Trypsin III; Trypsin IV
Target/Specificity	Recognizes endogenous levels of Trypsin 3 protein.
Dilution	WB~~WB (1/500 - 1/1000)
Format	Liquid in 0.42% Potassium phosphate, 0.87% Sodium chloride, pH 7.3, 30% glycerol, and 0.09% (W/V) sodium azide.
Storage	Store at -20 °C.Stable for 12 months from date of receipt

## Protein Information

---

Name	PRSS3
Synonyms	PRSS4, TRY3, TRY4
Function	Digestive protease that cleaves proteins preferentially after an Arg residue and has proteolytic activity toward Kunitz-type trypsin inhibitors.
Cellular Location	Secreted.
Tissue Location	Detected in pancreas and pancreatic fluid (at protein level) (PubMed:6698368). Expressed in pancreas and brain (PubMed:8294000). Detected in ileum (PubMed:12021776)

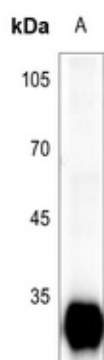
## Background

---

KLH-conjugated synthetic peptide encompassing a sequence within the center region of human Trypsin 3. The exact sequence is proprietary.

## Images

---



Western blot analysis of Trypsin 3 expression in mouse pancreas (A) whole cell lysates.

Please note: All products are 'FOR RESEARCH USE ONLY. NOT FOR USE IN DIAGNOSTIC OR THERAPEUTIC PROCEDURES'.