

Anti-RGS1 Antibody

Rabbit polyclonal antibody to RGS1

Catalog # AP59690

Product Information

Application	WB, IHC
Primary Accession	Q08116
Other Accession	Q9JL25
Reactivity	Human, Mouse, Rat
Host	Rabbit
Clonality	Polyclonal
Calculated MW	23858

Additional Information

Gene ID	5996
Other Names	1R20; BL34; IER1; Regulator of G-protein signaling 1; RGS1; B-cell activation protein BL34; Early response protein 1R20
Target/Specificity	KLH-conjugated synthetic peptide encompassing a sequence within the center region of human RGS1. The exact sequence is proprietary.
Dilution	WB~~WB (1/500 - 1/1000), IHC (1/100 - 1/200) IHC~~WB (1/500 - 1/1000), IHC (1/100 - 1/200)
Format	Liquid in 0.42% Potassium phosphate, 0.87% Sodium chloride, pH 7.3, 30% glycerol, and 0.09% (W/V) sodium azide.
Storage	Store at -20 °C.Stable for 12 months from date of receipt

Protein Information

Name	RGS1
Synonyms	1R20, BL34, IER1
Function	Regulates G protein-coupled receptor signaling cascades, including signaling downstream of the N-formylpeptide chemoattractant receptors and leukotriene receptors (PubMed: 10480894). Inhibits B cell chemotaxis toward CXCL12 (By similarity). Inhibits signal transduction by increasing the GTPase activity of G protein alpha subunits thereby driving them into their inactive GDP-bound form (PubMed: 10480894 , PubMed: 18434541).
Cellular Location	Cell membrane; Peripheral membrane protein; Cytoplasmic side. Cytoplasm, cytosol

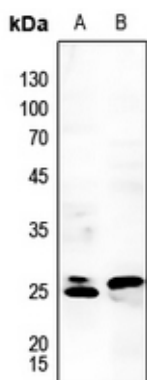
Tissue Location

Detected in peripheral blood monocytes (PubMed:10480894). Expression is relatively low in B-cells and chronic lymphocytic leukemia B-cells; however, in other types of malignant B- cell such as non-Hodgkin lymphoma and hairy cell leukemia, expression is constitutively high (PubMed:8473738).

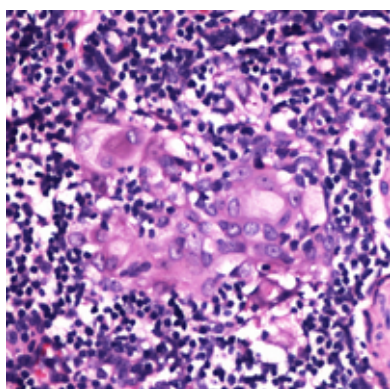
Background

KLH-conjugated synthetic peptide encompassing a sequence within the center region of human RGS1. The exact sequence is proprietary.

Images



Western blot analysis of RGS1 expression in mouse kidney (A), mouse spleen (B) whole cell lysates.



Immunohistochemical analysis of RGS1 staining in human thymus formalin fixed paraffin embedded tissue section. The section was pre-treated using heat mediated antigen retrieval with sodium citrate buffer (pH 6.0). The section was then incubated with the antibody at room temperature and detected using an HRP conjugated compact polymer system. DAB was used as the chromogen. The section was then counterstained with haematoxylin and mounted with DPX.

Please note: All products are 'FOR RESEARCH USE ONLY. NOT FOR USE IN DIAGNOSTIC OR THERAPEUTIC PROCEDURES'.