

Anti-SHB (pY246) Antibody

Rabbit polyclonal antibody to SHB (pY246)

Catalog # AP59699

Product Information

Application	WB
Primary Accession	Q15464
Other Accession	Q6PD21
Reactivity	Human, Mouse, Rat
Host	Rabbit
Clonality	Polyclonal
Calculated MW	55042

Additional Information

Gene ID	6461
Other Names	SH2 domain-containing adapter protein B
Target/Specificity	KLH-conjugated synthetic peptide encompassing a sequence within the center region of human SHB. The exact sequence is proprietary.
Dilution	WB~~WB (1/500 - 1/1000)
Format	Liquid in 0.42% Potassium phosphate, 0.87% Sodium chloride, pH 7.3, 30% glycerol, and 0.09% (W/V) sodium azide.
Storage	Store at -20 °C.Stable for 12 months from date of receipt

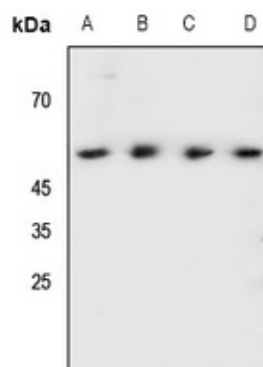
Protein Information

Name	SHB
Function	Adapter protein which regulates several signal transduction cascades by linking activated receptors to downstream signaling components. May play a role in angiogenesis by regulating FGFR1, VEGFR2 and PDGFR signaling. May also play a role in T-cell antigen receptor/TCR signaling, interleukin-2 signaling, apoptosis and neuronal cells differentiation by mediating basic-FGF and NGF-induced signaling cascades. May also regulate IRS1 and IRS2 signaling in insulin- producing cells.
Cellular Location	Cytoplasm. Cell membrane; Peripheral membrane protein; Cytoplasmic side. Note=Associates with membrane lipid rafts upon TCR stimulation
Tissue Location	Widely expressed..

Background

KLH-conjugated synthetic peptide encompassing a sequence within the center region of human SHB. The exact sequence is proprietary.

Images



Western blot analysis of SHB (pY246) expression in HeLa (A), A375 (B), rat kidney (C), rat spleen (D) whole cell lysates.

Please note: All products are 'FOR RESEARCH USE ONLY. NOT FOR USE IN DIAGNOSTIC OR THERAPEUTIC PROCEDURES'.