

Anti-PEPT1 Antibody

Rabbit polyclonal antibody to PEPT1

Catalog # AP59700

Product Information

Application	WB
Primary Accession	P46059
Other Accession	Q9JIP7
Reactivity	Human, Mouse, Rat, Monkey
Host	Rabbit
Clonality	Polyclonal
Calculated MW	78806

Additional Information

Gene ID	6564
Other Names	PEPT1; Solute carrier family 15 member 1; Intestinal H(+)/peptide cotransporter; Oligopeptide transporter, small intestine isoform; Peptide transporter 1
Target/Specificity	KLH-conjugated synthetic peptide encompassing a sequence within the center region of human PEPT1. The exact sequence is proprietary.
Dilution	WB~~WB (1/500 - 1/1000)
Format	Liquid in 0.42% Potassium phosphate, 0.87% Sodium chloride, pH 7.3, 30% glycerol, and 0.09% (W/V) sodium azide.
Storage	Store at -20 °C.Stable for 12 months from date of receipt

Protein Information

Name	SLC15A1 (HGNC:10920)
Function	<p>Electrogenic proton-coupled amino-acid transporter that transports oligopeptides of 2 to 4 amino acids with a preference for dipeptides. Transports neutral and monovalently charged peptides with a proton to peptide stoichiometry of 1:1 or 2:1 (By similarity) (PubMed:15521010, PubMed:18367661, PubMed:19685173, PubMed:26320580, PubMed:7896779, PubMed:8914574, PubMed:9835627). Primarily responsible for the absorption of dietary di- and tripeptides from the small intestinal lumen (By similarity). Mediates transepithelial transport of muramyl and N-formylated bacterial dipeptides contributing to recognition of pathogenic bacteria by the mucosal immune system (PubMed:15521010, PubMed:9835627).</p> <p>Apical cell membrane; Multi-pass membrane protein. Note=Localized to the</p>

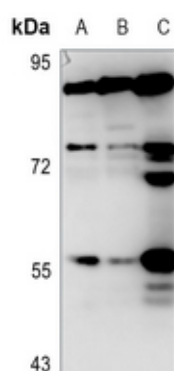
Cellular Location apical membrane of enterocytes

Tissue Location Expressed in small intestine.

Background

KLH-conjugated synthetic peptide encompassing a sequence within the center region of human PEPT1. The exact sequence is proprietary.

Images



Western blot analysis of PEPT1 expression in HEK293T (A), H1688 (B), H1792 (C) whole cell lysates.

Please note: All products are 'FOR RESEARCH USE ONLY. NOT FOR USE IN DIAGNOSTIC OR THERAPEUTIC PROCEDURES'.