

Anti-OATP1 Antibody

Rabbit polyclonal antibody to OATP1

Catalog # AP59701

Product Information

Application	WB, IP
Primary Accession	P46721
Reactivity	Human, Mouse, Rat
Host	Rabbit
Clonality	Polyclonal
Calculated MW	74145

Additional Information

Gene ID	6579
Other Names	OATP; OATP1; OATP1A2; SLC21A3; Solute carrier organic anion transporter family member 1A2; OATP-A; Organic anion-transporting polypeptide 1; OATP-1; Sodium-independent organic anion transporter; Solute carrier family 21 member 3
Target/Specificity	Recognizes endogenous levels of OATP1 protein.
Dilution	WB~~WB (1/500 - 1/1000), IP (1/10 - 1/100) IP~~N/A
Format	Liquid in 0.42% Potassium phosphate, 0.87% Sodium chloride, pH 7.3, 30% glycerol, and 0.09% (W/V) sodium azide.
Storage	Store at -20 °C.Stable for 12 months from date of receipt

Protein Information

Name	SLCO1A2
Synonyms	OATP, OATP1, OATP1A2, SLC21A3
Function	Na(+)-independent transporter that mediates the cellular uptake of a broad range of organic anions such as the endogenous bile salts cholate and deoxycholate, either in their unconjugated or conjugated forms (taurocholate and glycocholate), at the plasmam membrane (PubMed: 19129463 , PubMed: 7557095). Responsible for intestinal absorption of bile acids (By similarity). Transports dehydroepiandrosterone 3-sulfate (DHEAS), a major circulating steroid secreted by the adrenal cortex, as well as estrone 3-sulfate and 17beta-estradiol 17-O-(beta-D-glucuronate) (PubMed: 11159893 , PubMed: 12568656 , PubMed: 19129463 , PubMed: 23918469 , PubMed: 25560245 , PubMed: 9539145). Mediates apical uptake of all-trans-retinol (atROL) across human retinal pigment epithelium, which is

essential to maintaining the integrity of the visual cycle and thus vision (PubMed:[25560245](#)). Involved in the uptake of clinically used drugs (PubMed:[17301733](#), PubMed:[20686826](#), PubMed:[27777271](#)). Capable of thyroid hormone transport (both T3 or 3,3',5'-triiodo-L-thyronine, and T4 or L-tyroxine) (PubMed:[19129463](#), PubMed:[20358049](#)). Also transports prostaglandin E2 (PubMed:[19129463](#)). Plays roles in blood-brain and -cerebrospinal fluid barrier transport of organic anions and signal mediators, and in hormone uptake by neural cells (By similarity). May also play a role in the reuptake of neuropeptides such as substance P/TAC1 and vasoactive intestinal peptide/VIP released from retinal neurons (PubMed:[25132355](#)). May play an important role in plasma and tissue distribution of the structurally diverse chemotherapeutic drugs methotrexate and paclitaxel (PubMed:[23243220](#)). Shows a pH-sensitive substrate specificity which may be ascribed to the protonation state of the binding site and leads to a stimulation of substrate transport in an acidic microenvironment (PubMed:[19129463](#)). Hydrogencarbonate/HCO₃⁻ acts as the probable counteranion that exchanges for organic anions (PubMed:[19129463](#)). May contribute to regulate the transport of organic compounds in testis across the blood-testis-barrier (Probable).

Cellular Location

Cell membrane; Multi-pass membrane protein. Basal cell membrane; Multi-pass membrane protein. Note=Localized to the basal membrane of Sertoli cells.

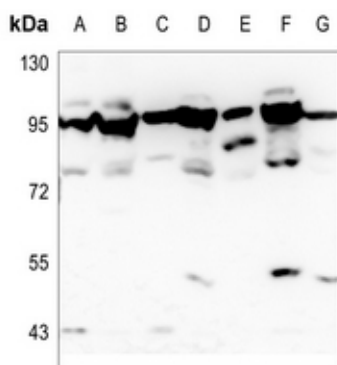
Tissue Location

Higher expression in the brain than in liver and kidney (PubMed:15632119, PubMed:7557095, PubMed:9539145). Expressed in brain neurons in both cortex and hippocampus (PubMed:10873595, PubMed:25132355). Expressed in placental trophoblasts (PubMed:12409283). Also expressed in lung and testes at lower levels (PubMed:7557095). Expressed in the eye (at protein level) (PubMed:25560245). Expressed in the retina in the outer and inner nuclear layers, the inner plexiform layer and the ganglion cell layer (PubMed:25132355). Expressed in liver and prostate (PubMed:10873595) In testis, primarily localized to the basal membrane of Sertoli cells and weakly expressed in Leydig cells and within the tubules (PubMed:35307651). Expressed in fetal brain and liver (PubMed:10873595).

Background

KLH-conjugated synthetic peptide encompassing a sequence within the center region of human OATP1. The exact sequence is proprietary.

Images



Western blot analysis of OATP1 expression in HEK293T (A), PC12 (B), U2OS (C), mouse testis (D), mouse kidney (E), rat testis (F), rat kidney (G) whole cell lysates.