

Anti-SOD1 Antibody

Rabbit polyclonal antibody to SOD1

Catalog # AP59705

Product Information

Application	WB
Primary Accession	P00441
Other Accession	P08228
Reactivity	Human, Mouse, Rat, Rabbit, Monkey, Bovine, SARS
Host	Rabbit
Clonality	Polyclonal
Calculated MW	15936

Additional Information

Gene ID	6647
Other Names	Superoxide dismutase [Cu-Zn]; Superoxide dismutase 1; hSod1
Target/Specificity	Recognizes endogenous levels of SOD1 protein.
Dilution	WB~~WB (1/500 - 1/1000)
Format	Liquid in 0.42% Potassium phosphate, 0.87% Sodium chloride, pH 7.3, 30% glycerol, and 0.09% (W/V) sodium azide.
Storage	Store at -20 °C.Stable for 12 months from date of receipt

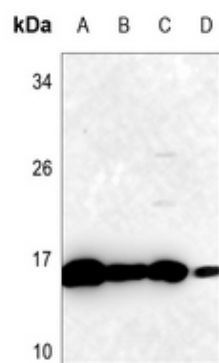
Protein Information

Name	SOD1 (HGNC:11179)
Function	Destroys radicals which are normally produced within the cells and which are toxic to biological systems.
Cellular Location	Cytoplasm. Nucleus. Note=Predominantly cytoplasmic; the pathogenic variants ALS1 Arg-86 and Ala-94 gradually aggregates and accumulates in mitochondria.

Background

KLH-conjugated synthetic peptide encompassing a sequence within the center region of human SOD1. The exact sequence is proprietary.

Images



Western blot analysis of SOD1 expression in mouse liver (A), mouse testis (B), rat liver (C), rat testis (D) whole cell lysates.

Please note: All products are 'FOR RESEARCH USE ONLY. NOT FOR USE IN DIAGNOSTIC OR THERAPEUTIC PROCEDURES'.