

# Anti-STAT6 Antibody

Rabbit polyclonal antibody to STAT6

Catalog # AP59710

## Product Information

---

<b>Application</b>	WB, IHC
<b>Primary Accession</b>	<a href="#">P42226</a>
<b>Other Accession</b>	<a href="#">P52633</a>
<b>Reactivity</b>	Human, Mouse, Rabbit, Monkey, Pig, Bovine, Drosophila
<b>Host</b>	Rabbit
<b>Clonality</b>	Polyclonal
<b>Calculated MW</b>	94135

## Additional Information

---

<b>Gene ID</b>	6778
<b>Other Names</b>	Signal transducer and activator of transcription 6; IL-4 Stat
<b>Target/Specificity</b>	Recognizes endogenous levels of STAT6 protein.
<b>Dilution</b>	WB~~WB (1/500 - 1/1000), IHC (1/100 - 1/200) IHC~~WB (1/500 - 1/1000), IHC (1/100 - 1/200)
<b>Format</b>	Liquid in 0.42% Potassium phosphate, 0.87% Sodium chloride, pH 7.3, 30% glycerol, and 0.09% (W/V) sodium azide.
<b>Storage</b>	Store at -20 °C.Stable for 12 months from date of receipt

## Protein Information

---

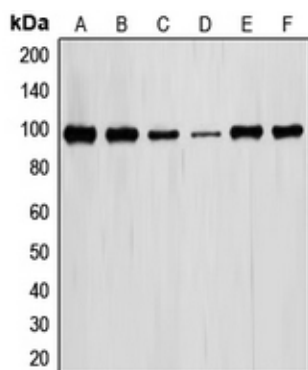
<b>Name</b>	STAT6
<b>Function</b>	Carries out a dual function: signal transduction and activation of transcription. Involved in IL4/interleukin-4- and IL3/interleukin-3-mediated signaling.
<b>Cellular Location</b>	Cytoplasm. Nucleus. Note=Translocated into the nucleus in response to phosphorylation

## Background

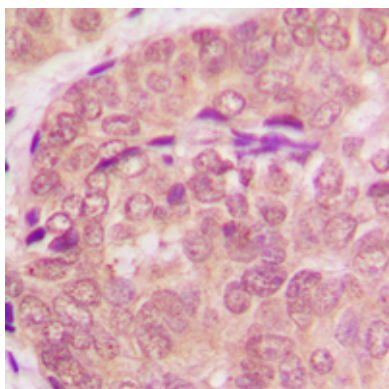
---

KLH-conjugated synthetic peptide encompassing a sequence within the center region of human STAT6. The exact sequence is proprietary.

## Images



Western blot analysis of STAT6 expression in MCF7 (A), HeLa (B), HT29 (C), RAW246.7 (D), PC12 (E), COS7 (F) whole cell lysates.



Immunohistochemical analysis of STAT6 staining in human breast cancer formalin fixed paraffin embedded tissue section. The section was pre-treated using heat mediated antigen retrieval with sodium citrate buffer (pH 6.0). The section was then incubated with the antibody at room temperature and detected using an HRP conjugated compact polymer system. DAB was used as the chromogen. The section was then counterstained with haematoxylin and mounted with DPX.

Please note: All products are 'FOR RESEARCH USE ONLY. NOT FOR USE IN DIAGNOSTIC OR THERAPEUTIC PROCEDURES'.