

# Anti-TCF19 Antibody

Rabbit polyclonal antibody to TCF19

Catalog # AP59714

## Product Information

---

<b>Application</b>	WB
<b>Primary Accession</b>	<a href="#">Q9Y242</a>
<b>Reactivity</b>	Human, Mouse, Rat
<b>Host</b>	Rabbit
<b>Clonality</b>	Polyclonal
<b>Calculated MW</b>	37184

## Additional Information

---

<b>Gene ID</b>	6941
<b>Other Names</b>	SC1; Transcription factor 19; TCF-19; Transcription factor SC1
<b>Target/Specificity</b>	Recognizes endogenous levels of TCF19 protein.
<b>Dilution</b>	WB~~WB (1/500 - 1/1000)
<b>Format</b>	Liquid in 0.42% Potassium phosphate, 0.87% Sodium chloride, pH 7.3, 30% glycerol, and 0.09% (W/V) sodium azide.
<b>Storage</b>	Store at -20 °C.Stable for 12 months from date of receipt

## Protein Information

---

<b>Name</b>	TCF19
<b>Synonyms</b>	SC1
<b>Function</b>	Potential transcription factor that may play a role in the regulation of genes involved in cell cycle G1/S transition (PubMed: <a href="#">1868030</a> , PubMed: <a href="#">31141247</a> ). May bind to regulatory elements of genes, including the promoter of the transcription factor FOXO1 (PubMed: <a href="#">31141247</a> ).
<b>Cellular Location</b>	Nucleus.

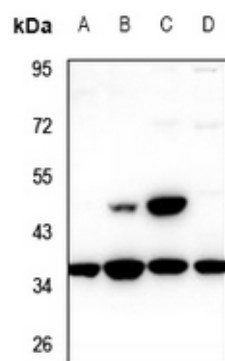
## Background

---

KLH-conjugated synthetic peptide encompassing a sequence within the center region of human TCF19. The exact sequence is proprietary.

## Images

---



Western blot analysis of TCF19 expression in CT26 (A), C6 (B), MCF7 (C), A549 (D) whole cell lysates.

Please note: All products are 'FOR RESEARCH USE ONLY. NOT FOR USE IN DIAGNOSTIC OR THERAPEUTIC PROCEDURES'.