

# Anti-CD141 Antibody

Rabbit polyclonal antibody to CD141

Catalog # AP59716

## Product Information

---

Application	WB
Primary Accession	<a href="#">P07204</a>
Other Accession	<a href="#">P15306</a>
Reactivity	Human, Mouse, Rat
Host	Rabbit
Clonality	Polyclonal
Calculated MW	60329

## Additional Information

---

Gene ID	7056
Other Names	THRM; Thrombomodulin; TM; Fetomodulin; CD141
Target/Specificity	KLH-conjugated synthetic peptide encompassing a sequence within the C-term region of human CD141. The exact sequence is proprietary.
Dilution	WB~~WB (1/500 - 1/1000)
Format	Liquid in 0.42% Potassium phosphate, 0.87% Sodium chloride, pH 7.3, 30% glycerol, and 0.09% (W/V) sodium azide.
Storage	Store at -20 °C.Stable for 12 months from date of receipt

## Protein Information

---

Name	THBD
Synonyms	THRM
Function	Endothelial cell receptor that plays a critical role in regulating several physiological processes including hemostasis, coagulation, fibrinolysis, inflammation, and angiogenesis (PubMed: <a href="#">10761923</a> ). Acts as a cofactor for thrombin activation of protein C/PROC on the surface of vascular endothelial cells leading to initiation of the activated protein C anticoagulant pathway (PubMed: <a href="#">29323190</a> , PubMed: <a href="#">33836597</a> , PubMed: <a href="#">9395524</a> ). Also accelerates the activation of the plasma carboxypeptidase B2/CPB2, which catalyzes removal of C-terminal basic amino acids from its substrates including kinins or anaphylatoxins leading to fibrinolysis inhibition (PubMed: <a href="#">26663133</a> ). Plays critical protective roles in changing the cleavage specificity of protease-activated receptor 1/PAR1, inhibiting endothelial cell permeability and inflammation (By similarity). Suppresses inflammation distinctly from its

anticoagulant cofactor activity by sequestering HMGB1 thereby preventing it from engaging cellular receptors such as RAGE and contributing to the inflammatory response (PubMed:[15841214](#)).

**Cellular Location** Membrane; Single-pass type I membrane protein.

**Tissue Location** Endothelial cells are unique in synthesizing thrombomodulin

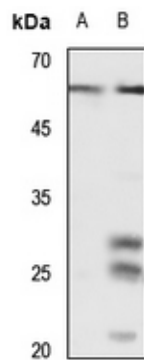
## Background

---

KLH-conjugated synthetic peptide encompassing a sequence within the C-term region of human CD141. The exact sequence is proprietary.

## Images

---



Western blot analysis of CD141 expression in HEK293T (A), mouse lung (B) whole cell lysates.

Please note: All products are 'FOR RESEARCH USE ONLY. NOT FOR USE IN DIAGNOSTIC OR THERAPEUTIC PROCEDURES'.