

Anti-CLIP2 Antibody

Rabbit polyclonal antibody to CLIP2

Catalog # AP59732

Product Information

Application	WB
Primary Accession	Q9UDT6
Reactivity	Human, Mouse, Rat, Monkey
Host	Rabbit
Clonality	Polyclonal
Calculated MW	115837

Additional Information

Gene ID	7461
Other Names	CYLN2; KIAA0291; WBSCR3; WBSCR4; WSCR4; CAP-Gly domain-containing linker protein 2; Cytoplasmic linker protein 115; CLIP-115; Cytoplasmic linker protein 2; Williams-Beuren syndrome chromosomal region 3 protein; Williams-Beuren syndrome chromosomal region 4 protein
Target/Specificity	KLH-conjugated synthetic peptide encompassing a sequence within the C-term region of human CLIP2. The exact sequence is proprietary.
Dilution	WB~~WB (1/500 - 1/1000)
Format	Liquid in 0.42% Potassium phosphate, 0.87% Sodium chloride, pH 7.3, 30% glycerol, and 0.09% (W/V) sodium azide.
Storage	Store at -20 °C.Stable for 12 months from date of receipt

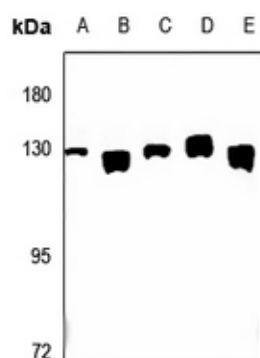
Protein Information

Name	CLIP2
Synonyms	CYLN2, KIAA0291, WBSCR3, WBSCR4, WSCR4
Function	Seems to link microtubules to dendritic lamellar body (DLB), a membranous organelle predominantly present in bulbous dendritic appendages of neurons linked by dendrodendritic gap junctions. May operate in the control of brain-specific organelle translocations (By similarity).
Cellular Location	Cytoplasm {ECO:0000250 UniProtKB:O55156}. Cytoplasm, cytoskeleton {ECO:0000250 UniProtKB:Q9Z0H8}. Note=Localizes preferentially to the ends of tyrosinated microtubules {ECO:0000250 UniProtKB:Q9Z0H8}

Background

KLH-conjugated synthetic peptide encompassing a sequence within the C-term region of human CLIP2. The exact sequence is proprietary.

Images



Western blot analysis of CLIP2 expression in AML12 (A), PC12 (B), A549 (C), LO2 (D), HeLa (E) whole cell lysates.

Please note: All products are 'FOR RESEARCH USE ONLY. NOT FOR USE IN DIAGNOSTIC OR THERAPEUTIC PROCEDURES'.