

Anti-ZNF227 Antibody

Rabbit polyclonal antibody to ZNF227

Catalog # AP59735

Product Information

Application	WB
Primary Accession	Q86WZ6
Reactivity	Human, Mouse, Rat
Host	Rabbit
Clonality	Polyclonal
Calculated MW	92033

Additional Information

Gene ID	7770
Other Names	Zinc finger protein 227
Target/Specificity	Recognizes endogenous levels of ZNF227 protein.
Dilution	WB~~WB (1/500 - 1/1000)
Format	Liquid in 0.42% Potassium phosphate, 0.87% Sodium chloride, pH 7.3, 30% glycerol, and 0.09% (W/V) sodium azide.
Storage	Store at -20 °C.Stable for 12 months from date of receipt

Protein Information

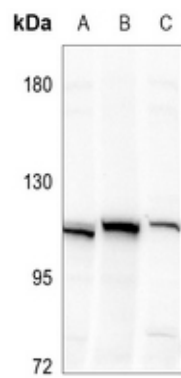
Name	ZNF227
Function	May be involved in transcriptional regulation.
Cellular Location	Nucleus.

Background

KLH-conjugated synthetic peptide encompassing a sequence within the center region of human ZNF227. The exact sequence is proprietary.

Images

Western blot analysis of ZNF227 expression in BV2 (A), rat thymus (B), U87MG (C) whole cell lysates.



Please note: All products are 'FOR RESEARCH USE ONLY. NOT FOR USE IN DIAGNOSTIC OR THERAPEUTIC PROCEDURES'.