

# Anti-Adracalin Antibody

Rabbit polyclonal antibody to Adracalin

Catalog # AP59736

## Product Information

---

Application	WB
Primary Accession	<a href="#">Q9NRG9</a>
Other Accession	<a href="#">P58742</a>
Reactivity	Human, Mouse, Rat
Host	Rabbit
Clonality	Polyclonal
Calculated MW	59574

## Additional Information

---

Gene ID	8086
Other Names	ADRACALA; Aladin; Adracalin
Target/Specificity	Recognizes endogenous levels of Adracalin protein.
Dilution	WB~~WB (1/500 - 1/1000)
Format	Liquid in 0.42% Potassium phosphate, 0.87% Sodium chloride, pH 7.3, 30% glycerol, and 0.09% (W/V) sodium azide.
Storage	Store at -20 °C.Stable for 12 months from date of receipt

## Protein Information

---

Name	AAAS
Synonyms	ADRACALA
Function	Plays a role in the normal development of the peripheral and central nervous system (PubMed: <a href="#">11062474</a> , PubMed: <a href="#">11159947</a> , PubMed: <a href="#">16022285</a> ). Required for the correct localization of aurora kinase AURKA and the microtubule minus end-binding protein NUMA1 as well as a subset of AURKA targets which ensures proper spindle formation and timely chromosome alignment (PubMed: <a href="#">26246606</a> ).
Cellular Location	Nucleus, nuclear pore complex. Cytoplasm, cytoskeleton, spindle pole. Nucleus envelope. Note=In metaphase cells localizes within the spindle with some accumulation around spindle poles, with the highest concentration between the centrosome and metaphase plate (PubMed: <a href="#">26246606</a> ). The localization to the spindle is microtubule- mediated (PubMed: <a href="#">26246606</a> ).

**Tissue Location**

Widely expressed (PubMed:11159947, PubMed:16022285). Particularly abundant in cerebellum, corpus callosum, adrenal gland, pituitary gland, gastrointestinal structures and fetal lung (PubMed:11159947).

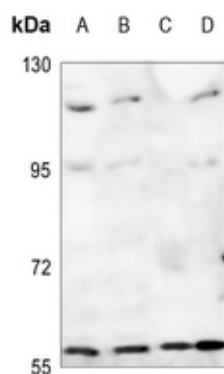
**Background**

---

KLH-conjugated synthetic peptide encompassing a sequence within the C-term region of human Adracalin. The exact sequence is proprietary.

**Images**

---



Western blot analysis of Adracalin expression in Hela (A), A375 (B), mouse testis (C), rat testis (D) whole cell lysates.

Please note: All products are 'FOR RESEARCH USE ONLY. NOT FOR USE IN DIAGNOSTIC OR THERAPEUTIC PROCEDURES'.