

Anti-EOMES Antibody

Rabbit polyclonal antibody to EOMES

Catalog # AP59738

Product Information

Application	WB
Primary Accession	O95936
Other Accession	O54839
Reactivity	Human, Mouse, Rat
Host	Rabbit
Clonality	Polyclonal
Calculated MW	72732

Additional Information

Gene ID	8320
Other Names	TBR2; Eomesodermin homolog; T-box brain protein 2; T-brain-2; TBR-2
Target/Specificity	Recognizes endogenous levels of EOMES protein.
Dilution	WB~~WB (1/500 - 1/1000)
Format	Liquid in 0.42% Potassium phosphate, 0.87% Sodium chloride, pH 7.3, 30% glycerol, and 0.09% (W/V) sodium azide.
Storage	Store at -20 °C.Stable for 12 months from date of receipt

Protein Information

Name	EOMES
Synonyms	TBR2
Function	Functions as a transcriptional activator playing a crucial role during development. Functions in trophoblast differentiation and later in gastrulation, regulating both mesoderm delamination and endoderm specification. Plays a role in brain development being required for the specification and the proliferation of the intermediate progenitor cells and their progeny in the cerebral cortex (PubMed: 17353897). Required for differentiation and migration of unipolar dendritic brush cells (PubMed: 33488348). Also involved in the differentiation of CD8+ T-cells during immune response regulating the expression of lytic effector genes (PubMed: 17566017).
Cellular Location	Nucleus.

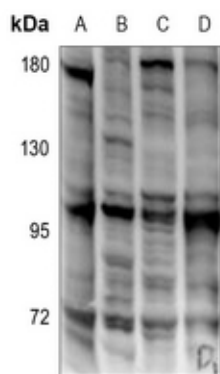
Tissue Location

Expressed in CD8+ T-cells.

Background

KLH-conjugated synthetic peptide encompassing a sequence within the N-term region of human EOMES. The exact sequence is proprietary.

Images



Western blot analysis of EOMES expression in BV2 (A), C6 (B), A549 (C), Jurkat (D) whole cell lysates.

Please note: All products are 'FOR RESEARCH USE ONLY. NOT FOR USE IN DIAGNOSTIC OR THERAPEUTIC PROCEDURES'.