

Anti-PPFIBP1 Antibody

Rabbit polyclonal antibody to PPFIBP1

Catalog # AP59743

Product Information

Application	WB, IP
Primary Accession	Q86W92
Reactivity	Human, Mouse, Rat
Host	Rabbit
Clonality	Polyclonal
Calculated MW	114024

Additional Information

Gene ID	8496
Other Names	KIAA1230; Liprin-beta-1; Protein tyrosine phosphatase receptor type f polypeptide-interacting protein-binding protein 1; PTPRF-interacting protein-binding protein 1; hSGT2
Target/Specificity	KLH-conjugated synthetic peptide encompassing a sequence within the center region of human PPFIBP1. The exact sequence is proprietary.
Dilution	WB~~WB (1/500 - 1/1000), IP (1/10 - 1/100) IP~~N/A
Format	Liquid in 0.42% Potassium phosphate, 0.87% Sodium chloride, pH 7.3, 30% glycerol, and 0.09% (W/V) sodium azide.
Storage	Store at -20 °C.Stable for 12 months from date of receipt

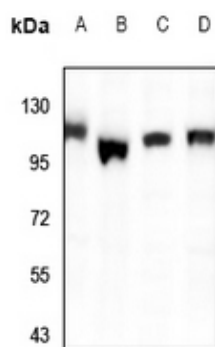
Protein Information

Name	PPFIBP1
Synonyms	KIAA1230
Function	May regulate the disassembly of focal adhesions. Did not bind receptor-like tyrosine phosphatases type 2A.
Cellular Location	Cytoplasm, cell cortex
Tissue Location	Widely expressed. Absent in liver.

Background

KLH-conjugated synthetic peptide encompassing a sequence within the center region of human PPFIBP1. The exact sequence is proprietary.

Images



Western blot analysis of PPFIBP1 expression in PC12 (A), CT26 (B), HEK293T (C), A549 (D) whole cell lysates.

Please note: All products are 'FOR RESEARCH USE ONLY. NOT FOR USE IN DIAGNOSTIC OR THERAPEUTIC PROCEDURES'.