

Anti-MMP23 Antibody

Rabbit polyclonal antibody to MMP23

Catalog # AP59744

Product Information

Application	WB
Primary Accession	O75900
Other Accession	O88676
Reactivity	Human, Mouse, Rat, Monkey
Host	Rabbit
Clonality	Polyclonal
Calculated MW	43935

Additional Information

Gene ID	8510
Other Names	MMP21; MMP21; MMP22; Matrix metalloproteinase-23; MMP-23; Femalysin; MIFR-1; Matrix metalloproteinase-21; MMP-21; Matrix metalloproteinase-22; MMP-22
Target/Specificity	KLH-conjugated synthetic peptide encompassing a sequence within the C-term region of human MMP23. The exact sequence is proprietary.
Dilution	WB~~WB (1/500 - 1/1000)
Format	Liquid in 0.42% Potassium phosphate, 0.87% Sodium chloride, pH 7.3, 30% glycerol, and 0.09% (W/V) sodium azide.
Storage	Store at -20 °C.Stable for 12 months from date of receipt

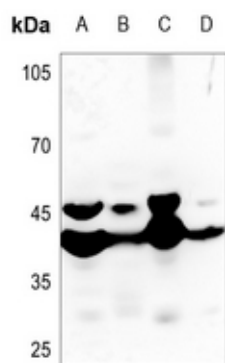
Protein Information

Name	MMP23B
Synonyms	MMP21, MMP22
Function	Protease. May regulate the surface expression of some potassium channels by retaining them in the endoplasmic reticulum (By similarity).
Cellular Location	Endoplasmic reticulum membrane; Single-pass type II membrane protein. Membrane; Single-pass type II membrane protein. Note=A secreted form produced by proteolytic cleavage may also exist.
Tissue Location	Predominantly expressed in ovary, testis and prostate.

Background

KLH-conjugated synthetic peptide encompassing a sequence within the C-term region of human MMP23. The exact sequence is proprietary.

Images



Western blot analysis of MMP23 expression in mouse heart (A), mouse muscle (B), rat heart (C), rat muscle (D) whole cell lysates.

Please note: All products are 'FOR RESEARCH USE ONLY. NOT FOR USE IN DIAGNOSTIC OR THERAPEUTIC PROCEDURES'.