

Anti-COPS3 Antibody

Rabbit polyclonal antibody to COPS3

Catalog # AP59746

Product Information

Application	WB, IF/IC, IHC
Primary Accession	Q9UNS2
Other Accession	O88543
Reactivity	Human, Mouse, Rat, Monkey, Pig, Bovine, Drosophila
Host	Rabbit
Clonality	Polyclonal
Calculated MW	47873

Additional Information

Gene ID	8533
Other Names	CSN3; COP9 signalosome complex subunit 3; SGN3; Signalosome subunit 3; JAB1-containing signalosome subunit 3
Target/Specificity	Recognizes endogenous levels of COPS3 protein.
Dilution	WB~~WB (1/500 - 1/1000), IHC (1/100 - 1/200), IF/IC (1/100 - 1/500) IF/IC~~N/A IHC~~WB (1/500 - 1/1000), IHC (1/100 - 1/200), IF/IC (1/100 - 1/500)
Format	Liquid in 0.42% Potassium phosphate, 0.87% Sodium chloride, pH 7.3, 30% glycerol, and 0.09% (W/V) sodium azide.
Storage	Store at -20 °C.Stable for 12 months from date of receipt

Protein Information

Name	COPS3
Synonyms	CSN3
Function	Component of the COP9 signalosome complex (CSN), a complex involved in various cellular and developmental processes. The CSN complex is an essential regulator of the ubiquitin (Ubl) conjugation pathway by mediating the deneddylation of the cullin subunits of SCF- type E3 ligase complexes, leading to decrease the Ubl ligase activity of SCF-type complexes such as SCF, CSA or DDB2. The complex is also involved in phosphorylation of p53/TP53, c-jun/JUN, IkappaBalpha/NFKBIA, ITPK1 and IRF8/ICSBP, possibly via its association with CK2 and PKD kinases. CSN-dependent phosphorylation of TP53 and JUN promotes and protects degradation by the Ubl system, respectively.

Cellular Location

Cytoplasm. Nucleus

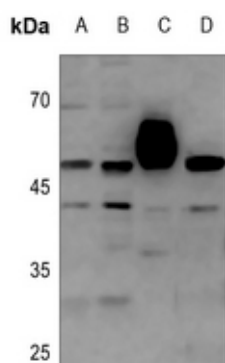
Tissue Location

Widely expressed. Expressed at high level in heart and skeletal muscle.

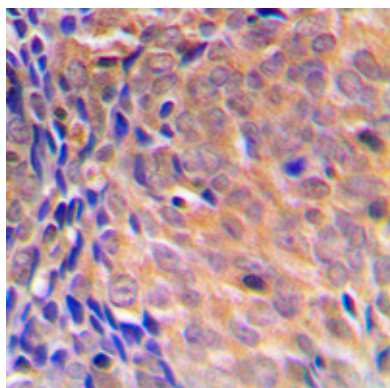
Background

KLH-conjugated synthetic peptide encompassing a sequence within the center region of human COPS3. The exact sequence is proprietary.

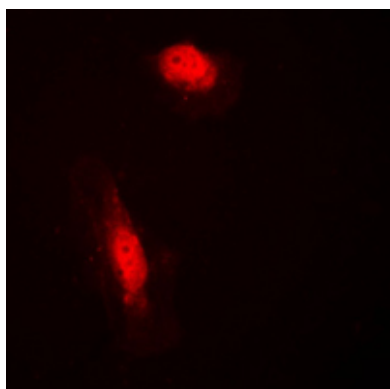
Images



Western blot analysis of COPS3 expression in H1688 (A), A549 (B), mouse kidney (C), rat kidney (D) whole cell lysates.



Immunohistochemical analysis of COPS3 staining in human breast cancer formalin fixed paraffin embedded tissue section. The section was pre-treated using heat mediated antigen retrieval with sodium citrate buffer (pH 6.0). The section was then incubated with the antibody at room temperature and detected using an HRP conjugated compact polymer system. DAB was used as the chromogen. The section was then counterstained with haematoxylin and mounted with DPX.



Immunofluorescent analysis of COPS3 staining in HeLa cells. Formalin-fixed cells were permeabilized with 0.1% Triton X-100 in TBS for 5-10 minutes and blocked with 3% BSA-PBS for 30 minutes at room temperature. Cells were probed with the primary antibody in 3% BSA-PBS and incubated overnight at 4 °C in a humidified chamber. Cells were washed with PBST and incubated with a DyLight 594-conjugated secondary antibody (red) in PBS at room temperature in the dark.

Please note: All products are 'FOR RESEARCH USE ONLY. NOT FOR USE IN DIAGNOSTIC OR THERAPEUTIC PROCEDURES'.