

Anti-PRPF18 Antibody

Rabbit polyclonal antibody to PRPF18

Catalog # AP59747

Product Information

Application	WB, IP
Primary Accession	Q99633
Other Accession	Q8BM39
Reactivity	Human, Mouse, Rat, Monkey, Bovine
Host	Rabbit
Clonality	Polyclonal
Calculated MW	39860

Additional Information

Gene ID	8559
Other Names	HPRP18; Pre-mRNA-splicing factor 18; PRP18 homolog; hPRP18
Target/Specificity	Recognizes endogenous levels of PRPF18 protein.
Dilution	WB~~WB (1/500 - 1/1000), IP (1/10 - 1/100) IP~~N/A
Format	Liquid in 0.42% Potassium phosphate, 0.87% Sodium chloride, pH 7.3, 30% glycerol, and 0.09% (W/V) sodium azide.
Storage	Store at -20 °C.Stable for 12 months from date of receipt

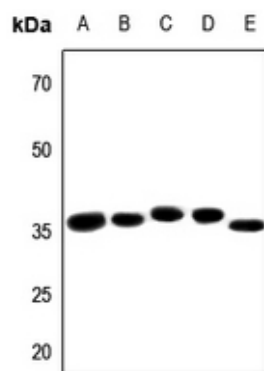
Protein Information

Name	PRPF18
Synonyms	HPRP18
Function	Participates in the second step of pre-mRNA splicing.
Cellular Location	Nucleus speckle. Note=Colocalizes with spliceosomal snRNPs.

Background

KLH-conjugated synthetic peptide encompassing a sequence within the center region of human PRPF18. The exact sequence is proprietary.

Images



Western blot analysis of PRPF18 expression in HEK293T (A), Hela (B), mouse kidney (C), mouse lung (D), rat kidney (E) whole cell lysates.

Please note: All products are 'FOR RESEARCH USE ONLY. NOT FOR USE IN DIAGNOSTIC OR THERAPEUTIC PROCEDURES'.