

Anti-EDG6 Antibody

Rabbit polyclonal antibody to EDG6

Catalog # AP59750

Product Information

| | |
|--------------------------|------------------------|
| Application | WB |
| Primary Accession | O95977 |
| Reactivity | Human, Mouse |
| Host | Rabbit |
| Clonality | Polyclonal |
| Calculated MW | 41623 |

Additional Information

| | |
|---------------------------|--|
| Gene ID | 8698 |
| Other Names | EDG6; Sphingosine 1-phosphate receptor 4; S1P receptor 4; S1P4; Endothelial differentiation G-protein coupled receptor 6; Sphingosine 1-phosphate receptor Edg-6; S1P receptor Edg-6 |
| Target/Specificity | KLH-conjugated synthetic peptide encompassing a sequence within the C-term region of human EDG6. The exact sequence is proprietary. |
| Dilution | WB~~WB (1/500 - 1/1000) |
| Format | Liquid in 0.42% Potassium phosphate, 0.87% Sodium chloride, pH 7.3, 30% glycerol, and 0.09% (W/V) sodium azide. |
| Storage | Store at -20 °C.Stable for 12 months from date of receipt |

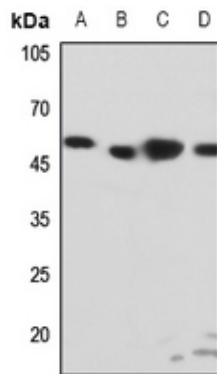
Protein Information

| | |
|--------------------------|--|
| Name | S1PR4 |
| Synonyms | EDG6 |
| Function | Receptor for the lysosphingolipid sphingosine 1-phosphate (S1P). S1P is a bioactive lysophospholipid that elicits diverse physiological effect on most types of cells and tissues. May be involved in cell migration processes that are specific for lymphocytes. |
| Cellular Location | Cell membrane; Multi-pass membrane protein. |
| Tissue Location | Specifically expressed in fetal and adult lymphoid and hematopoietic tissue as well as in lung. Considerable level of expression in adult and fetal spleen as well as adult peripheral leukocytes and lung. Lower expression in adult thymus, lymph node, bone marrow, and appendix as well as in fetal liver, |

Background

KLH-conjugated synthetic peptide encompassing a sequence within the C-term region of human EDG6. The exact sequence is proprietary.

Images



Western blot analysis of EDG6 expression in HEK293T (A), Hela (B), HepG2 (C), mouse spleen (D) whole cell lysates.

Please note: All products are 'FOR RESEARCH USE ONLY. NOT FOR USE IN DIAGNOSTIC OR THERAPEUTIC PROCEDURES'.