

Anti-DR4 Antibody

Rabbit polyclonal antibody to DR4
Catalog # AP59756

Product Information

Application	WB, IP
Primary Accession	O00220
Reactivity	Human, Mouse, Rat
Host	Rabbit
Clonality	Polyclonal
Calculated MW	50089

Additional Information

Gene ID	8797
Other Names	APO2; DR4; TRAILR1; Tumor necrosis factor receptor superfamily member 10A; Death receptor 4; TNF-related apoptosis-inducing ligand receptor 1; TRAIL receptor 1; TRAIL-R1; CD261
Target/Specificity	Recognizes endogenous levels of DR4 protein.
Dilution	WB~~WB (1/500 - 1/1000), IP (1/10 - 1/100) IP~~N/A
Format	Liquid in 0.42% Potassium phosphate, 0.87% Sodium chloride, pH 7.3, 30% glycerol, and 0.09% (W/V) sodium azide.
Storage	Store at -20 °C.Stable for 12 months from date of receipt

Protein Information

Name	TNFRSF10A
Synonyms	APO2, DR4, TRAILR1
Function	Receptor for the cytotoxic ligand TNFSF10/TRAIL (PubMed: 26457518 , PubMed: 38532423). The adapter molecule FADD recruits caspase-8 to the activated receptor. The resulting death-inducing signaling complex (DISC) performs caspase-8 proteolytic activation which initiates the subsequent cascade of caspases (aspartate-specific cysteine proteases) mediating apoptosis (PubMed: 19090789). Promotes the activation of NF-kappa-B (PubMed: 9430227).
Cellular Location	Cell membrane; Single-pass type I membrane protein. Membrane raft. Cytoplasm, cytosol. Note=Palmitoylation is required for association with membranes.

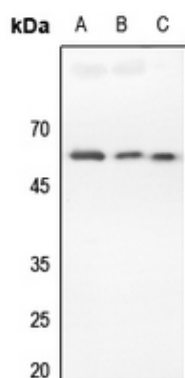
Tissue Location

Widely expressed. High levels are found in spleen, peripheral blood leukocytes, small intestine and thymus, but also in K- 562 erythroleukemia cells, MCF-7 breast carcinoma cells and activated T-cells

Background

KLH-conjugated synthetic peptide encompassing a sequence within the C-term region of human DR4. The exact sequence is proprietary.

Images



Western blot analysis of DR4 expression in A375 (A), A2780 (B), rat spleen (C) whole cell lysates.

Please note: All products are 'FOR RESEARCH USE ONLY. NOT FOR USE IN DIAGNOSTIC OR THERAPEUTIC PROCEDURES'.