

# Anti-RAB7L1 Antibody

Rabbit polyclonal antibody to RAB7L1

Catalog # AP59762

## Product Information

Application	WB
Primary Accession	<a href="#">O14966</a>
Other Accession	<a href="#">Q91YQ1</a>
Reactivity	Human, Mouse, Rat
Host	Rabbit
Clonality	Polyclonal
Calculated MW	23155

## Additional Information

Gene ID	8934
Other Names	Ras-related protein Rab-7L1; Rab-7-like protein 1
Target/Specificity	Recognizes endogenous levels of RAB7L1 protein.
Dilution	WB~~WB (1/500 - 1/1000)
Format	Liquid in 0.42% Potassium phosphate, 0.87% Sodium chloride, pH 7.3, 30% glycerol, and 0.09% (W/V) sodium azide.
Storage	Store at -20 °C.Stable for 12 months from date of receipt

## Protein Information

Name	RAB29
Synonyms	RAB7L1
Function	<p>The small GTPases Rab are key regulators in vesicle trafficking (PubMed:<a href="#">24788816</a>). Essential for maintaining the integrity of the endosome-trans-Golgi network structure (By similarity). Together with LRRK2, plays a role in the retrograde trafficking pathway for recycling proteins, such as mannose 6 phosphate receptor (M6PR), between lysosomes and the Golgi apparatus in a retromer-dependent manner (PubMed:<a href="#">24788816</a>). Recruits LRRK2 to the Golgi complex and stimulates LRRK2 kinase activity (PubMed:<a href="#">29212815</a>, PubMed:<a href="#">38127736</a>). Stimulates phosphorylation of RAB10 'Thr-73' by LRRK2 (PubMed:<a href="#">38127736</a>). Regulates neuronal process morphology in the intact central nervous system (CNS) (By similarity). May play a role in the formation of typhoid toxin transport intermediates during Salmonella enterica serovar Typhi (S.typhi) epithelial cell infection (PubMed:<a href="#">22042847</a>).</p>

## Cellular Location

Cell membrane; Lipid-anchor; Cytoplasmic side. Cytoplasm. Cytoplasm, perinuclear region. Golgi apparatus. Golgi apparatus membrane. Golgi apparatus, trans-Golgi network. Vacuole. Cytoplasm, cytoskeleton. Note=Colocalizes with LRRK2 along tubular structures emerging from Golgi apparatus (PubMed:29212815) Colocalizes with GM130 at the Golgi apparatus (PubMed:22042847) Colocalizes with dynamic tubules emerging from and retracting to the Golgi apparatus (PubMed:22042847, PubMed:38127736). Colocalizes with TGN46 at the trans-Golgi network (TGN) (PubMed:24788816). In *Salmonella enterica* serovar Typhi (S.typhi) infected epithelial cells, is recruited and colocalized with both S.typhi-containing vacuoles and dynamic tubules as well as those emerging from the vacuole toward the cell periphery (PubMed:22042847).

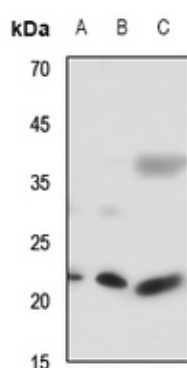
## Tissue Location

Ubiquitous..

## Background

KLH-conjugated synthetic peptide encompassing a sequence within the center region of human RAB7L1. The exact sequence is proprietary.

## Images



Western blot analysis of RAB7L1 expression in mouse lung (A), mouse kidney (B), rat kidney (C) whole cell lysates.

Please note: All products are 'FOR RESEARCH USE ONLY. NOT FOR USE IN DIAGNOSTIC OR THERAPEUTIC PROCEDURES'.