

Anti-Nop30 Antibody

Rabbit polyclonal antibody to Nop30

Catalog # AP59763

Product Information

Application	WB
Primary Accession	O60936
Reactivity	Human, Mouse, Rat
Host	Rabbit
Clonality	Polyclonal
Calculated MW	22629

Additional Information

Gene ID	8996
Other Names	Myp; NOL3; Nop30; Nucleolar protein 3; apoptosis repressor ARC; apoptosis repressor with CARD; apoptosis repressor with caspase recruitment domain (CARD); muscle-enriched cytoplasmic protein; nucleolar protein of 30 kDa
Target/Specificity	Recognizes endogenous levels of Nop30 protein.
Dilution	WB~~WB (1/500 - 1/1000)
Format	Liquid in 0.42% Potassium phosphate, 0.87% Sodium chloride, pH 7.3, 30% glycerol, and 0.09% (W/V) sodium azide.
Storage	Store at -20 °C.Stable for 12 months from date of receipt

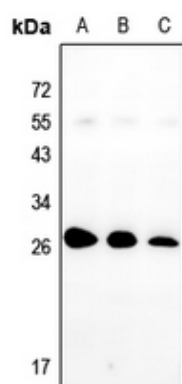
Protein Information

Name	NOL3 (HGNC:7869)
Function	[Isoform 1]: May be involved in RNA splicing.
Cellular Location	[Isoform 1]: Nucleus, nucleolus. Note=The SR-rich C-terminus mediates nuclear localization. [Isoform 2]: Cytoplasm. Mitochondrion {ECO:0000250 UniProtKB:Q62881}. Sarcoplasmic reticulum {ECO:0000250 UniProtKB:Q62881}. Membrane; Lipid-anchor. Note=Phosphorylation at Thr-149 results in translocation to mitochondria. Colocalized with mitochondria in response to oxidative stress. {ECO:0000250 UniProtKB:Q62881}
Tissue Location	Highly expressed in heart and skeletal muscle. Detected at low levels in placenta, liver, kidney and pancreas

Background

KLH-conjugated synthetic peptide encompassing a sequence within the C-term region of human Nop30. The exact sequence is proprietary.

Images



Western blot analysis of Nop30 expression in HCT116 (A), MCF7 (B), LO2 (C) whole cell lysates.

Please note: All products are 'FOR RESEARCH USE ONLY. NOT FOR USE IN DIAGNOSTIC OR THERAPEUTIC PROCEDURES'.