

Anti-PIAS2 Antibody

Rabbit polyclonal antibody to PIAS2

Catalog # AP59765

Product Information

Application	WB
Primary Accession	Q75928
Other Accession	Q8C5D8
Reactivity	Human, Mouse, Rat, Chicken, Bovine, Drosophila
Host	Rabbit
Clonality	Polyclonal
Calculated MW	68240

Additional Information

Gene ID	9063
Other Names	PIASX; E3 SUMO-protein ligase PIAS2; Androgen receptor-interacting protein 3; ARIP3; DAB2-interacting protein; DIP; Msx-interacting zinc finger protein; Miz1; PIAS-NY protein; Protein inhibitor of activated STAT x; Protein inhibitor of activated STAT2
Target/Specificity	Recognizes endogenous levels of PIAS2 protein.
Dilution	WB~~WB (1/500 - 1/1000)
Format	Liquid in 0.42% Potassium phosphate, 0.87% Sodium chloride, pH 7.3, 30% glycerol, and 0.09% (W/V) sodium azide.
Storage	Store at -20 °C.Stable for 12 months from date of receipt

Protein Information

Name	PIAS2
Synonyms	PIASX
Function	Functions as an E3-type small ubiquitin-like modifier (SUMO) ligase, stabilizing the interaction between UBE2I and the substrate, and as a SUMO-tethering factor. Plays a crucial role as a transcriptional coregulator in various cellular pathways, including the STAT pathway, the p53 pathway and the steroid hormone signaling pathway. The effects of this transcriptional coregulation, transactivation or silencing may vary depending upon the biological context and the PIAS2 isoform studied. However, it seems to be mostly involved in gene silencing. Binds to sumoylated ELK1 and enhances its transcriptional activity by preventing recruitment of HDAC2 by ELK1, thus reversing SUMO-mediated repression of ELK1 transactivation activity. Isoform

PIAS2-beta, but not isoform PIAS2-alpha, promotes MDM2 sumoylation. Isoform PIAS2-alpha promotes PARK7 sumoylation. Isoform PIAS2-beta promotes NCOA2 sumoylation more efficiently than isoform PIAS2-alpha. Isoform PIAS2-alpha sumoylates PML at 'Lys-65' and 'Lys-160'.

Cellular Location

Nucleus speckle {ECO:0000250|UniProtKB:Q8C5D8}. Nucleus, PML body. Nucleus. Note=Colocalizes at least partially with promyelocytic leukemia nuclear bodies (PML NBs) (PubMed:22406621) Colocalizes with SUMO1 in nuclear granules (By similarity) {ECO:0000250|UniProtKB:Q8C5D8, ECO:0000269|PubMed:22406621}

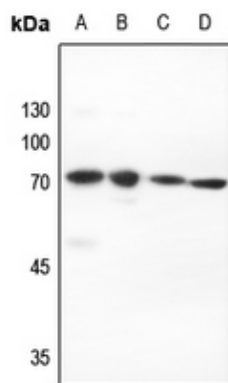
Tissue Location

Mainly expressed in testis. Isoform 3 is expressed predominantly in adult testis, weakly in pancreas, embryonic testis and sperm, and at very low levels in other organs

Background

KLH-conjugated synthetic peptide encompassing a sequence within the N-term region of human PIAS2. The exact sequence is proprietary.

Images



Western blot analysis of PIAS2 expression in Hela (A), H446 (B), mouse testis (C), rat lung (D) whole cell lysates.

Please note: All products are 'FOR RESEARCH USE ONLY. NOT FOR USE IN DIAGNOSTIC OR THERAPEUTIC PROCEDURES'.