

Anti-CD32c Antibody

Rabbit polyclonal antibody to CD32c

Catalog # AP59767

Product Information

Application	WB
Primary Accession	P31995
Reactivity	Human, Mouse, Rat
Host	Rabbit
Clonality	Polyclonal
Calculated MW	35578

Additional Information

Gene ID	9103
Other Names	CD32; FCG2; IGFR2; Low affinity immunoglobulin gamma Fc region receptor II-c; IgG Fc receptor II-c; CDw32; Fc-gamma RII-c; Fc-gamma-RIIc; FcRII-c; CD32
Target/Specificity	KLH-conjugated synthetic peptide encompassing a sequence within the C-term region of human CD32c. The exact sequence is proprietary.
Dilution	WB~~WB (1/500 - 1/1000)
Format	Liquid in 0.42% Potassium phosphate, 0.87% Sodium chloride, pH 7.3, 30% glycerol, and 0.09% (W/V) sodium azide.
Storage	Store at -20 °C.Stable for 12 months from date of receipt

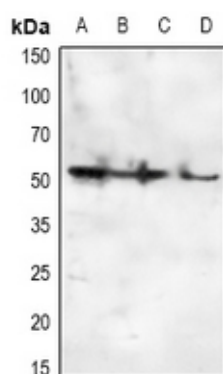
Protein Information

Name	FCGR2C
Synonyms	CD32, FCG2, IGFR2
Function	Receptor for the Fc region of complexed immunoglobulins gamma. Low affinity receptor. Involved in a variety of effector and regulatory functions such as phagocytosis of immune complexes and modulation of antibody production by B-cells.
Cellular Location	[Isoform IIC4]: Cytoplasm. [Isoform IIC2]: Cell membrane; Single-pass type I membrane protein
Tissue Location	Isoform IIC1 is detected in monocytes, macrophages, polymorphonuclear cells and natural killer cells

Background

KLH-conjugated synthetic peptide encompassing a sequence within the C-term region of human CD32c. The exact sequence is proprietary.

Images



Western blot analysis of CD32c expression in HEK293T (A), Hela (B), A549 (C), mouse lung (D) whole cell lysates.

Please note: All products are 'FOR RESEARCH USE ONLY. NOT FOR USE IN DIAGNOSTIC OR THERAPEUTIC PROCEDURES'.