

# Anti-LZK Antibody

Rabbit polyclonal antibody to LZK  
Catalog # AP59771

## Product Information

---

Application	WB, IP
Primary Accession	<a href="#">O43283</a>
Other Accession	<a href="#">Q1HKZ5</a>
Reactivity	Human, Mouse, Rat, Rabbit, Chicken, Bovine, Drosophila
Host	Rabbit
Clonality	Polyclonal
Calculated MW	108296

## Additional Information

---

Gene ID	9175
Other Names	LZK; Mitogen-activated protein kinase kinase kinase 13; Leucine zipper-bearing kinase; Mixed lineage kinase; MLK
Target/Specificity	KLH-conjugated synthetic peptide encompassing a sequence within the center region of human LZK. The exact sequence is proprietary.
Dilution	WB~~WB (1/500 - 1/1000), IP (1/10 - 1/100) IP~~N/A
Format	Liquid in 0.42% Potassium phosphate, 0.87% Sodium chloride, pH 7.3, 30% glycerol, and 0.09% (W/V) sodium azide.
Storage	Store at -20 °C.Stable for 12 months from date of receipt

## Protein Information

---

Name	MAP3K13 ( <a href="#">HGNC:6852</a> )
Function	Activates the JUN N-terminal pathway through activation of the MAP kinase kinase MAP2K7. Acts synergistically with PRDX3 to regulate the activation of NF-kappa-B in the cytosol. This activation is kinase-dependent and involves activating the IKK complex, the IKBKB- containing complex that phosphorylates inhibitors of NF-kappa-B.
Cellular Location	Cytoplasm. Membrane; Peripheral membrane protein
Tissue Location	Expressed in the adult brain, liver, placenta and pancreas, with expression strongest in the pancreas

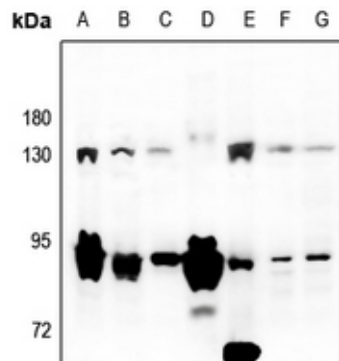
## Background

---

KLH-conjugated synthetic peptide encompassing a sequence within the center region of human LZK. The exact sequence is proprietary.

## Images

---



Western blot analysis of LZK expression in EC9706 (A), SGC7901 (B), Panc1 (C), AML12 (D), rat brain (E), HepG2 (F), LO2 (G) whole cell lysates.

Please note: All products are 'FOR RESEARCH USE ONLY. NOT FOR USE IN DIAGNOSTIC OR THERAPEUTIC PROCEDURES'.