

# Anti-NOLC1 Antibody

Rabbit polyclonal antibody to NOLC1

Catalog # AP59773

## Product Information

---

Application	WB
Primary Accession	<a href="#">Q14978</a>
Reactivity	Human, Mouse, Rat, Bovine
Host	Rabbit
Clonality	Polyclonal
Calculated MW	73603

## Additional Information

---

Gene ID	9221
Other Names	KIAA0035; NS5ATP13; Nucleolar and coiled-body phosphoprotein 1; 140 kDa nucleolar phosphoprotein; Nopp140; Hepatitis C virus NS5A-transactivated protein 13; HCV NS5A-transactivated protein 13; Nucleolar 130 kDa protein; Nucleolar phosphoprotein p130
Target/Specificity	Recognizes endogenous levels of NOLC1 protein.
Dilution	WB~~WB (1/500 - 1/1000)
Format	Liquid in 0.42% Potassium phosphate, 0.87% Sodium chloride, pH 7.3, 30% glycerol, and 0.09% (W/V) sodium azide.
Storage	Store at -20 °C.Stable for 12 months from date of receipt

## Protein Information

---

Name	NOLC1 ( <a href="#">HGNC:15608</a> )
Function	Nucleolar protein that acts as a regulator of RNA polymerase I by connecting RNA polymerase I with enzymes responsible for ribosomal processing and modification (PubMed: <a href="#">10567578</a> , PubMed: <a href="#">26399832</a> ). Required for neural crest specification: following monoubiquitination by the BCR(KBTBD8) complex, associates with TCOF1 and acts as a platform to connect RNA polymerase I with enzymes responsible for ribosomal processing and modification, leading to remodel the translational program of differentiating cells in favor of neural crest specification (PubMed: <a href="#">26399832</a> ). Involved in nucleologenesis, possibly by playing a role in the maintenance of the fundamental structure of the fibrillar center and dense fibrillar component in the nucleolus (PubMed: <a href="#">9016786</a> ). It has intrinsic GTPase and ATPase activities (PubMed: <a href="#">9016786</a> ).

## Cellular Location

Nucleus, nucleolus. Cytoplasm. Note=Shuttles between the nucleolus and the cytoplasm. At telophase it begins to assemble into granular-like pre-nucleolar bodies which are subsequently relocated to nucleoli at the early G1-phase.

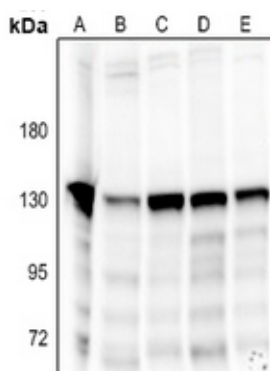
## Background

---

KLH-conjugated synthetic peptide encompassing a sequence within the C-term region of human NOLC1. The exact sequence is proprietary.

## Images

---



Western blot analysis of NOLC1 expression in CT26 (A), C6 (B), A549 (C), Panc1 (D), SGC7901 (E) whole cell lysates.

Please note: All products are 'FOR RESEARCH USE ONLY. NOT FOR USE IN DIAGNOSTIC OR THERAPEUTIC PROCEDURES'.