

Anti-B4GALT5 Antibody

Rabbit polyclonal antibody to B4GALT5

Catalog # AP59777

Product Information

Application	WB
Primary Accession	Q43286
Other Accession	Q9JMK0
Reactivity	Human, Mouse, Rat, Monkey
Host	Rabbit
Clonality	Polyclonal
Calculated MW	45119

Additional Information

Gene ID	9334
Other Names	Beta-1, 4-galactosyltransferase 5; Beta-1, 4-GalTase 5; Beta4Gal-T5; b4Gal-T5; Beta-1, 4-GalT II; UDP-Gal:beta-GlcNAc beta-1, 4-galactosyltransferase 5; UDP-galactose:beta-N-acetylglucosamine beta-1, 4-galactosyltransferase 5
Target/Specificity	KLH-conjugated synthetic peptide encompassing a sequence within the C-term region of human B4GALT5. The exact sequence is proprietary.
Dilution	WB~~WB (1/500 - 1/1000)
Format	Liquid in 0.42% Potassium phosphate, 0.87% Sodium chloride, pH 7.3, 30% glycerol, and 0.09% (W/V) sodium azide.
Storage	Store at -20 °C.Stable for 12 months from date of receipt

Protein Information

Name	B4GALT5 (HGNC:928)
Function	Catalyzes the synthesis of lactosylceramide (LacCer) via the transfer of galactose from UDP-galactose to glucosylceramide (GlcCer) (PubMed: 24498430). LacCer is the starting point in the biosynthesis of all gangliosides (membrane-bound glycosphingolipids) which play pivotal roles in the CNS including neuronal maturation and axonal and myelin formation (By similarity). Plays a role in the glycosylation of BMPR1A and regulation of its protein stability (By similarity). Essential for extraembryonic development during early embryogenesis (By similarity).
Cellular Location	Golgi apparatus, Golgi stack membrane {ECO:0000250 UniProtKB:P15291}; Single-pass type II membrane protein Golgi apparatus {ECO:0000250 UniProtKB:A0A1S6M251}. Note=Trans cisternae of Golgi stack.

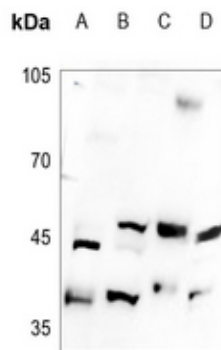
{ECO:0000250|UniProtKB:P15291}

Tissue Location Ubiquitously expressed.

Background

KLH-conjugated synthetic peptide encompassing a sequence within the C-term region of human B4GALT5. The exact sequence is proprietary.

Images



Western blot analysis of B4GALT5 expression in K562 (A), A549 (B), mouse heart (C), rat brain (D) whole cell lysates.

Please note: All products are 'FOR RESEARCH USE ONLY. NOT FOR USE IN DIAGNOSTIC OR THERAPEUTIC PROCEDURES'.