

# Anti-NFE2L3 Antibody

Rabbit polyclonal antibody to NFE2L3

Catalog # AP59779

## Product Information

---

<b>Application</b>	WB
<b>Primary Accession</b>	<a href="#">Q9Y4A8</a>
<b>Reactivity</b>	Human, Rat
<b>Host</b>	Rabbit
<b>Clonality</b>	Polyclonal
<b>Calculated MW</b>	76154

## Additional Information

---

<b>Gene ID</b>	9603
<b>Other Names</b>	NRF3; Nuclear factor erythroid 2-related factor 3; NF-E2-related factor 3; NFE2-related factor 3; Nuclear factor, erythroid derived 2, like 3
<b>Target/Specificity</b>	Recognizes endogenous levels of NFE2L3 protein.
<b>Dilution</b>	WB~~WB (1/500 - 1/1000)
<b>Format</b>	Liquid in 0.42% Potassium phosphate, 0.87% Sodium chloride, pH 7.3, 30% glycerol, and 0.09% (W/V) sodium azide.
<b>Storage</b>	Store at -20 °C.Stable for 12 months from date of receipt

## Protein Information

---

<b>Name</b>	NFE2L3
<b>Synonyms</b>	NRF3
<b>Function</b>	Activates erythroid-specific, globin gene expression.
<b>Cellular Location</b>	Nucleus {ECO:0000255 PROSITE-ProRule:PRU00978}.
<b>Tissue Location</b>	Highly expressed in human placenta and also in B- cell and monocyte cell lines. Low expression in heart, brain, lung, skeletal muscle, kidney and pancreas.

## Background

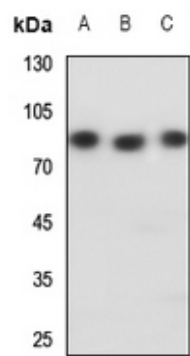
---

KLH-conjugated synthetic peptide encompassing a sequence within the center region of human NFE2L3. The

exact sequence is proprietary.

Images

---



Western blot analysis of NFE2L3 expression in H1688 (A), rat lung (B), rat testis (C) whole cell lysates.

Please note: All products are 'FOR RESEARCH USE ONLY. NOT FOR USE IN DIAGNOSTIC OR THERAPEUTIC PROCEDURES'.