

Anti-Synphilin 1 Antibody

Rabbit polyclonal antibody to Synphilin 1

Catalog # AP59780

Product Information

Application	WB, IHC
Primary Accession	Q9Y6H5
Reactivity	Human, Mouse, Rat
Host	Rabbit
Clonality	Polyclonal
Calculated MW	100409

Additional Information

Gene ID	9627
Other Names	Synphilin-1; Sph1; Alpha-synuclein-interacting protein
Target/Specificity	KLH-conjugated synthetic peptide encompassing a sequence within the C-term region of human Synphilin 1. The exact sequence is proprietary.
Dilution	WB~~WB (1/500 - 1/1000), IHC (1/100 - 1/200) IHC~~WB (1/500 - 1/1000), IHC (1/100 - 1/200)
Format	Liquid in 0.42% Potassium phosphate, 0.87% Sodium chloride, pH 7.3, 30% glycerol, and 0.09% (W/V) sodium azide.
Storage	Store at -20 °C.Stable for 12 months from date of receipt

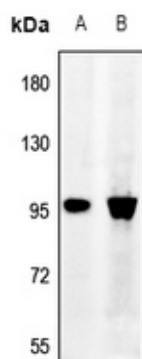
Protein Information

Name	SNCAIP
Function	Isoform 2 inhibits the ubiquitin ligase activity of SIAH1 and inhibits proteasomal degradation of target proteins. Isoform 2 inhibits autoubiquitination and proteasomal degradation of SIAH1, and thereby increases cellular levels of SIAH. Isoform 2 modulates SNCA monoubiquitination by SIAH1.
Cellular Location	Cytoplasm. Note=Detected in cytoplasmic inclusion bodies, together with SNCA
Tissue Location	Detected in brain (at protein level). Widely expressed, with highest levels in brain, heart and placenta

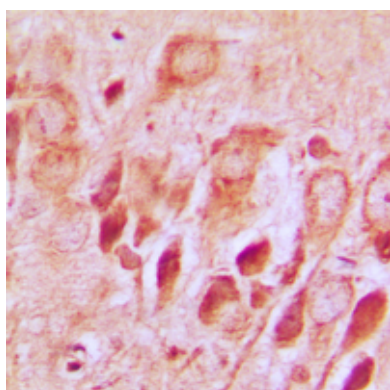
Background

KLH-conjugated synthetic peptide encompassing a sequence within the C-term region of human Synphilin 1. The exact sequence is proprietary.

Images



Western blot analysis of Synphilin 1 expression in PMVEC (A), BV2 (B) whole cell lysates.



Immunohistochemical analysis of Synphilin 1 staining in human brain formalin fixed paraffin embedded tissue section. The section was pre-treated using heat mediated antigen retrieval with sodium citrate buffer (pH 6.0). The section was then incubated with the antibody at room temperature and detected using an HRP conjugated compact polymer system. DAB was used as the chromogen. The section was then counterstained with haematoxylin and mounted with DPX.

Please note: All products are 'FOR RESEARCH USE ONLY. NOT FOR USE IN DIAGNOSTIC OR THERAPEUTIC PROCEDURES'.