

Anti-TOM20 Antibody

Rabbit polyclonal antibody to TOM20

Catalog # AP59783

Product Information

Application	WB, IP
Primary Accession	Q15388
Other Accession	Q9DCC8
Reactivity	Human, Mouse, Rat, Bovine
Host	Rabbit
Clonality	Polyclonal
Calculated MW	16298

Additional Information

Gene ID	9804
Other Names	KIAA0016; Mitochondrial import receptor subunit TOM20 homolog; Mitochondrial 20 kDa outer membrane protein; Outer mitochondrial membrane receptor Tom20
Target/Specificity	Recognizes endogenous levels of TOM20 protein.
Dilution	WB~~WB (1/500 - 1/1000), IP (1/10 - 1/100) IP~~N/A
Format	Liquid in 0.42% Potassium phosphate, 0.87% Sodium chloride, pH 7.3, 30% glycerol, and 0.09% (W/V) sodium azide.
Storage	Store at -20 °C.Stable for 12 months from date of receipt

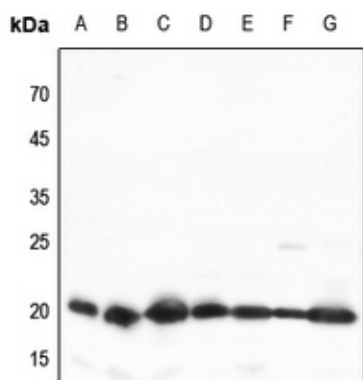
Protein Information

Name	TOMM20
Synonyms	KIAA0016
Function	Central component of the receptor complex responsible for the recognition and translocation of cytosolically synthesized mitochondrial preproteins. Together with TOM22 functions as the transit peptide receptor at the surface of the mitochondrion outer membrane and facilitates the movement of preproteins into the TOM40 translocation pore (By similarity). Required for the translocation across the mitochondrial outer membrane of cytochrome P450 monooxygenases.
Cellular Location	Mitochondrion outer membrane; Single-pass membrane protein

Background

KLH-conjugated synthetic peptide encompassing a sequence within the center region of human TOM20. The exact sequence is proprietary.

Images



Western blot analysis of TOM20 expression in HEK293T (A), Hela (B), H460 (C), mouse lung (D), mouse spleen (E), mouse kidney (F), rat spleen (G) whole cell lysates.

Citations

- [Mitochondrial transplantation reduces lower limb ischemia-reperfusion injury by increasing skeletal muscle energy and adipocyte browning.](#)

Please note: All products are 'FOR RESEARCH USE ONLY. NOT FOR USE IN DIAGNOSTIC OR THERAPEUTIC PROCEDURES'.