

# Anti-ENDOGL1 Antibody

Rabbit polyclonal antibody to ENDOGL1

Catalog # AP59785

## Product Information

---

<b>Application</b>	WB, IP
<b>Primary Accession</b>	<a href="#">Q9Y2C4</a>
<b>Reactivity</b>	Human, Mouse
<b>Host</b>	Rabbit
<b>Clonality</b>	Polyclonal
<b>Calculated MW</b>	41085

## Additional Information

---

<b>Gene ID</b>	9941
<b>Other Names</b>	ENDOGL1; ENDOGL2; ENGL; Nuclease EXOG mitochondrial; Endonuclease G-like 1; Endo G-like 1
<b>Target/Specificity</b>	Recognizes endogenous levels of ENDOGL1 protein.
<b>Dilution</b>	WB~~WB (1/500 - 1/1000), IP (1/10 - 1/100) IP~~N/A
<b>Format</b>	Liquid in 0.42% Potassium phosphate, 0.87% Sodium chloride, pH 7.3, 30% glycerol, and 0.09% (W/V) sodium azide.
<b>Storage</b>	Store at -20 °C.Stable for 12 months from date of receipt

## Protein Information

---

<b>Name</b>	EXOG
<b>Synonyms</b>	ENDOGL1, ENDOGL2, ENGL
<b>Function</b>	Endo/exonuclease with nicking activity towards supercoiled DNA, a preference for single-stranded DNA and 5'-3' exonuclease activity.
<b>Cellular Location</b>	Mitochondrion inner membrane
<b>Tissue Location</b>	Ubiquitous.

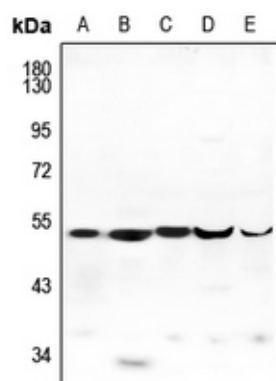
## Background

---

KLH-conjugated synthetic peptide encompassing a sequence within the center region of human ENDOGL1. The exact sequence is proprietary.

## Images

---



Western blot analysis of ENDOGL1 expression in Jurkat (A), LO2 (B), HEK293T (C), A549 (D), BV2 (E) whole cell lysates.

Please note: All products are 'FOR RESEARCH USE ONLY. NOT FOR USE IN DIAGNOSTIC OR THERAPEUTIC PROCEDURES'.