

# Anti-G3BP1 Antibody

Rabbit polyclonal antibody to G3BP1

Catalog # AP59790

## Product Information

Application	WB, IF/IC, IHC
Primary Accession	<a href="#">Q13283</a>
Other Accession	<a href="#">P97855</a>
Reactivity	Human, Mouse, Rat
Host	Rabbit
Clonality	Polyclonal
Calculated MW	52164

## Additional Information

Gene ID	10146
Other Names	G3BP; Ras GTPase-activating protein-binding protein 1; G3BP-1; ATP-dependent DNA helicase VIII; hDH VIII; GAP SH3 domain-binding protein 1
Target/Specificity	Recognizes endogenous levels of G3BP1 protein.
Dilution	WB~~WB (1/500 - 1/1000), IHC (1/100 - 1/200), IF/IC (1/100 - 1/500) IF/IC~~N/A IHC~~WB (1/500 - 1/1000), IHC (1/100 - 1/200), IF/IC (1/100 - 1/500)
Format	Liquid in 0.42% Potassium phosphate, 0.87% Sodium chloride, pH 7.3, 30% glycerol, and 0.09% (W/V) sodium azide.
Storage	Store at -20 °C.Stable for 12 months from date of receipt

## Protein Information

Name	G3BP1 {ECO:0000303 PubMed:23279204, ECO:0000312 HGNC:HGNC:30292}
Function	Protein involved in various processes, such as stress granule formation and innate immunity (PubMed: <a href="#">12642610</a> , PubMed: <a href="#">20180778</a> , PubMed: <a href="#">23279204</a> , PubMed: <a href="#">30510222</a> , PubMed: <a href="#">30804210</a> ). Plays an essential role in stress granule formation (PubMed: <a href="#">12642610</a> , PubMed: <a href="#">20180778</a> , PubMed: <a href="#">23279204</a> , PubMed: <a href="#">32302570</a> , PubMed: <a href="#">32302571</a> , PubMed: <a href="#">32302572</a> , PubMed: <a href="#">34739333</a> , PubMed: <a href="#">35977029</a> , PubMed: <a href="#">36183834</a> , PubMed: <a href="#">36279435</a> , PubMed: <a href="#">36692217</a> , PubMed: <a href="#">37379838</a> ). Stress granules are membraneless compartments that store mRNAs and proteins, such as stalled translation pre-initiation complexes, in response to stress (PubMed: <a href="#">12642610</a> , PubMed: <a href="#">20180778</a> ,

PubMed:[23279204](#), PubMed:[27022092](#), PubMed:[32302570](#), PubMed:[32302571](#), PubMed:[32302572](#), PubMed:[36279435](#), PubMed:[37379838](#)). Promotes formation of stress granules phase-separated membraneless compartment by undergoing liquid-liquid phase separation (LLPS) upon unfolded RNA-binding: functions as a molecular switch that triggers RNA-dependent LLPS in response to a rise in intracellular free RNA concentrations (PubMed:[32302570](#), PubMed:[32302571](#), PubMed:[32302572](#), PubMed:[34739333](#), PubMed:[36279435](#), PubMed:[36692217](#)). Also acts as an ATP- and magnesium-dependent helicase: unwinds DNA/DNA, RNA/DNA, and RNA/RNA substrates with comparable efficiency (PubMed:[9889278](#)). Acts unidirectionally by moving in the 5' to 3' direction along the bound single-stranded DNA (PubMed:[9889278](#)). Unwinds preferentially partial DNA and RNA duplexes having a 17 bp annealed portion and either a hanging 3' tail or hanging tails at both 5'- and 3'-ends (PubMed:[9889278](#)). Plays an essential role in innate immunity by promoting CGAS and RIGI activity (PubMed:[30510222](#), PubMed:[30804210](#)). Participates in the DNA-triggered cGAS/STING pathway by promoting the DNA binding and activation of CGAS (PubMed:[30510222](#)). Triggers the condensation of cGAS, a process probably linked to the formation of membrane-less organelles (PubMed:[34779554](#)). Also enhances RIGI-induced type I interferon production probably by helping RIGI at sensing pathogenic RNA (PubMed:[30804210](#)). May also act as a phosphorylation- dependent sequence-specific endoribonuclease in vitro: Cleaves exclusively between cytosine and adenine and cleaves MYC mRNA preferentially at the 3'-UTR (PubMed:[11604510](#)).

#### Cellular Location

Cytoplasm, cytosol. Perikaryon {ECO:0000250|UniProtKB:P97855}. Cytoplasm, Stress granule. Nucleus Note=Cytoplasmic in proliferating cells (PubMed:[11604510](#)). Cytosolic and partially nuclear in resting cells (PubMed:[11604510](#)). Recruited to stress granules in response to arsenite treatment (PubMed:[12642610](#), PubMed:[20180778](#)). The unphosphorylated form is recruited to stress granules (PubMed:[12642610](#)). HRAS signaling contributes to this process by regulating G3BP dephosphorylation (PubMed:[12642610](#))

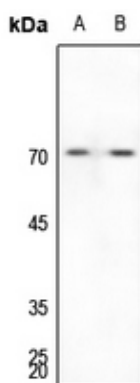
#### Tissue Location

Ubiquitous..

## Background

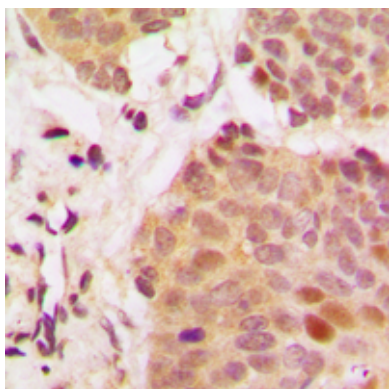
KLH-conjugated synthetic peptide encompassing a sequence within the center region of human G3BP1. The exact sequence is proprietary.

## Images

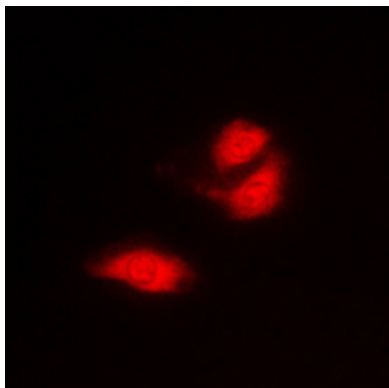


Western blot analysis of G3BP1 expression in A375 (A), DLD (B) whole cell lysates.

Immunohistochemical analysis of G3BP1 staining in human breast cancer formalin fixed paraffin embedded



tissue section. The section was pre-treated using heat mediated antigen retrieval with sodium citrate buffer (pH 6.0). The section was then incubated with the antibody at room temperature and detected using an HRP conjugated compact polymer system. DAB was used as the chromogen. The section was then counterstained with haematoxylin and mounted with DPX.



Immunofluorescent analysis of G3BP1 staining in A549 cells. Formalin-fixed cells were permeabilized with 0.1% Triton X-100 in TBS for 5-10 minutes and blocked with 3% BSA-PBS for 30 minutes at room temperature. Cells were probed with the primary antibody in 3% BSA-PBS and incubated overnight at 4 °C in a humidified chamber. Cells were washed with PBST and incubated with a DyLight 594-conjugated secondary antibody (red) in PBS at room temperature in the dark.

Please note: All products are 'FOR RESEARCH USE ONLY. NOT FOR USE IN DIAGNOSTIC OR THERAPEUTIC PROCEDURES'.