

# Anti-AASS Antibody

Rabbit polyclonal antibody to AASS  
Catalog # AP59791

## Product Information

---

<b>Application</b>	WB, IP
<b>Primary Accession</b>	<a href="#">Q9UDR5</a>
<b>Reactivity</b>	Human
<b>Host</b>	Rabbit
<b>Clonality</b>	Polyclonal
<b>Calculated MW</b>	102132

## Additional Information

---

<b>Gene ID</b>	10157
<b>Other Names</b>	Alpha-aminoadipic semialdehyde synthase mitochondrial; LKR/SDH
<b>Target/Specificity</b>	KLH-conjugated synthetic peptide encompassing a sequence within the center region of human AASS. The exact sequence is proprietary.
<b>Dilution</b>	WB~~WB (1/500 - 1/1000), IP (1/10 - 1/100) IP~~N/A
<b>Format</b>	Liquid in 0.42% Potassium phosphate, 0.87% Sodium chloride, pH 7.3, 30% glycerol, and 0.09% (W/V) sodium azide.
<b>Storage</b>	Store at -20 °C.Stable for 12 months from date of receipt

## Protein Information

---

<b>Name</b>	AASS ( <a href="#">HGNC:17366</a> )
<b>Function</b>	Bifunctional enzyme that catalyzes the first two steps in lysine degradation.
<b>Cellular Location</b>	Mitochondrion.
<b>Tissue Location</b>	Expressed in all 16 tissues examined with highest expression in the liver

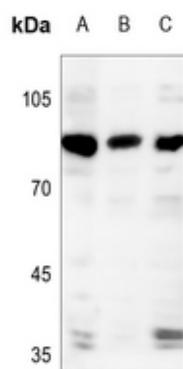
## Background

---

KLH-conjugated synthetic peptide encompassing a sequence within the center region of human AASS. The exact sequence is proprietary.

## Images

---



Western blot analysis of AASS expression in HEK293T (A), U2OS (B), H446 (C) whole cell lysates.

Please note: All products are 'FOR RESEARCH USE ONLY. NOT FOR USE IN DIAGNOSTIC OR THERAPEUTIC PROCEDURES'.