

Anti-CD172b Antibody

Rabbit polyclonal antibody to CD172b

Catalog # AP59795

Product Information

Application	WB, IP
Primary Accession	O00241
Reactivity	Human, Mouse, Bovine
Host	Rabbit
Clonality	Polyclonal
Calculated MW	43211

Additional Information

Gene ID	10326
Other Names	Signal-regulatory protein beta-1; SIRP-beta-1; CD172 antigen-like family member B; CD172b
Target/Specificity	KLH-conjugated synthetic peptide encompassing a sequence within the center region of human CD172b. The exact sequence is proprietary.
Dilution	WB~~WB (1/500 - 1/1000), IP (1/10 - 1/100) IP~~N/A
Format	Liquid in 0.42% Potassium phosphate, 0.87% Sodium chloride, pH 7.3, 30% glycerol, and 0.09% (W/V) sodium azide.
Storage	Store at -20 °C.Stable for 12 months from date of receipt

Protein Information

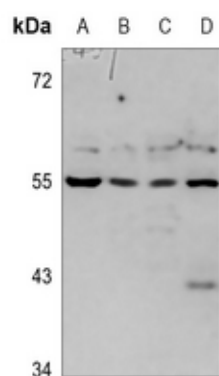
Name	SIRPB1
Function	Immunoglobulin-like cell surface receptor involved in the negative regulation of receptor tyrosine kinase-coupled signaling processes. Also participates in the recruitment of tyrosine kinase SYK. Triggers activation of myeloid cells when associated with TYROBP (PubMed: 10604985).
Cellular Location	Cell membrane; Single-pass type I membrane protein
Tissue Location	Detected in monocytes and dendritic cells.

Background

KLH-conjugated synthetic peptide encompassing a sequence within the center region of human CD172b. The

exact sequence is proprietary.

Images



Western blot analysis of CD172b expression in HEK293T (A), H1688 (B), A549 (C), mouse muscle (D) whole cell lysates.

Please note: All products are 'FOR RESEARCH USE ONLY. NOT FOR USE IN DIAGNOSTIC OR THERAPEUTIC PROCEDURES'.