

# Anti-SCML2 Antibody

Rabbit polyclonal antibody to SCML2

Catalog # AP59796

## Product Information

---

<b>Application</b>	WB
<b>Primary Accession</b>	<a href="#">Q9UQR0</a>
<b>Reactivity</b>	Human
<b>Host</b>	Rabbit
<b>Clonality</b>	Polyclonal
<b>Calculated MW</b>	77257

## Additional Information

---

<b>Gene ID</b>	10389
<b>Other Names</b>	Sex comb on midleg-like protein 2
<b>Target/Specificity</b>	KLH-conjugated synthetic peptide encompassing a sequence within the center region of human SCML2. The exact sequence is proprietary.
<b>Dilution</b>	WB~~WB (1/500 - 1/1000)
<b>Format</b>	Liquid in 0.42% Potassium phosphate, 0.87% Sodium chloride, pH 7.3, 30% glycerol, and 0.09% (W/V) sodium azide.
<b>Storage</b>	Store at -20 °C.Stable for 12 months from date of receipt

## Protein Information

---

<b>Name</b>	SCML2
<b>Function</b>	Putative Polycomb group (PcG) protein. PcG proteins act by forming multiprotein complexes, which are required to maintain the transcriptionally repressive state of homeotic genes throughout development (By similarity).
<b>Cellular Location</b>	Nucleus.
<b>Tissue Location</b>	Highly expressed in placenta, thymus and testis. Detected at lower levels in brain, liver, skeletal muscle, pancreas and ovary.

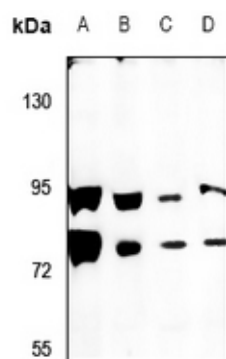
## Background

---

KLH-conjugated synthetic peptide encompassing a sequence within the center region of human SCML2. The exact sequence is proprietary.

## Images

---



Western blot analysis of SCML2 expression in HEK293T (A), K562 (B), A549 (C), H1792 (D) whole cell lysates.

Please note: All products are 'FOR RESEARCH USE ONLY. NOT FOR USE IN DIAGNOSTIC OR THERAPEUTIC PROCEDURES'.