

# Anti-PIAS3 Antibody

Rabbit polyclonal antibody to PIAS3

Catalog # AP59797

## Product Information

Application	WB, IHC
Primary Accession	<a href="#">Q9Y6X2</a>
Other Accession	<a href="#">O54714</a>
Reactivity	Human, Mouse, Rat, Pig, Bovine, Drosophila
Host	Rabbit
Clonality	Polyclonal
Calculated MW	68017

## Additional Information

Gene ID	10401
Other Names	E3 SUMO-protein ligase PIAS3; Protein inhibitor of activated STAT protein 3
Target/Specificity	Recognizes endogenous levels of PIAS3 protein.
Dilution	WB~~WB (1/500 - 1/1000), IHC (1/100 - 1/200) IHC~~WB (1/500 - 1/1000), IHC (1/100 - 1/200)
Format	Liquid in 0.42% Potassium phosphate, 0.87% Sodium chloride, pH 7.3, 30% glycerol, and 0.09% (W/V) sodium azide.
Storage	Store at -20 °C.Stable for 12 months from date of receipt

## Protein Information

Name	PIAS3
Function	Functions as an E3-type small ubiquitin-like modifier (SUMO) ligase, stabilizing the interaction between UBE2I and the substrate, and as a SUMO-tethering factor. Plays a crucial role as a transcriptional coregulation in various cellular pathways, including the STAT pathway and the steroid hormone signaling pathway. Involved in regulating STAT3 signaling via inhibiting STAT3 DNA-binding and suppressing cell growth. Enhances the sumoylation of MTA1 and may participate in its paralog-selective sumoylation (PubMed: <a href="#">21965678</a> , PubMed: <a href="#">9388184</a> ). Sumoylates CCAR2 which promotes its interaction with SIRT1 (PubMed: <a href="#">25406032</a> ). Diminishes the sumoylation of ZFH3 by preventing the colocalization of ZFH3 with SUMO1 in the nucleus (PubMed: <a href="#">24651376</a> ).
Cellular Location	Cytoplasm {ECO:0000250 UniProtKB:O54714}. Nucleus {ECO:0000250 UniProtKB:O54714}. Nucleus speckle

{ECO:0000250|UniProtKB:O54714}. Note=Colocalizes with MITF in the nucleus. Colocalizes with GFI1 in nuclear dots. Colocalizes with SUMO1 in nuclear granules. {ECO:0000250|UniProtKB:O54714}

## Tissue Location

Widely expressed..

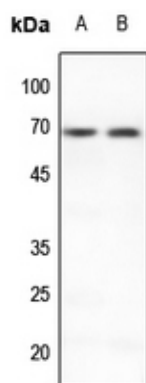
## Background

---

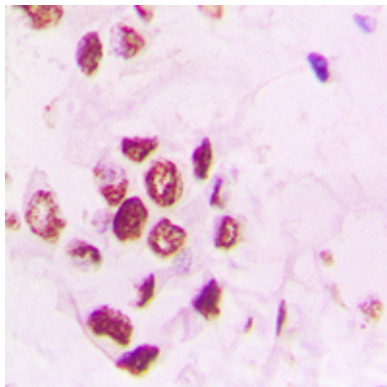
KLH-conjugated synthetic peptide encompassing a sequence within the N-term region of human PIAS3. The exact sequence is proprietary.

## Images

---



Western blot analysis of PIAS3 expression in rat lung (A), rat spleen (B) whole cell lysates.



Immunohistochemical analysis of PIAS3 staining in human lung cancer formalin fixed paraffin embedded tissue section. The section was pre-treated using heat mediated antigen retrieval with sodium citrate buffer (pH 6.0). The section was then incubated with the antibody at room temperature and detected using an HRP conjugated compact polymer system. DAB was used as the chromogen. The section was then counterstained with haematoxylin and mounted with DPX.

Please note: All products are 'FOR RESEARCH USE ONLY. NOT FOR USE IN DIAGNOSTIC OR THERAPEUTIC PROCEDURES'.