

Anti-AHA1 Antibody

Rabbit polyclonal antibody to AHA1

Catalog # AP59801

Product Information

Application	WB, IP
Primary Accession	O95433
Reactivity	Human
Host	Rabbit
Clonality	Polyclonal
Calculated MW	38274

Additional Information

Gene ID	10598
Other Names	C14orf3; Activator of 90 kDa heat shock protein ATPase homolog 1; AHA1; p38
Target/Specificity	Recognizes endogenous levels of AHA1 protein.
Dilution	WB~~WB (1/500 - 1/1000), IP (1/10 - 1/100) IP~~N/A
Format	Liquid in 0.42% Potassium phosphate, 0.87% Sodium chloride, pH 7.3, 30% glycerol, and 0.09% (W/V) sodium azide.
Storage	Store at -20 °C.Stable for 12 months from date of receipt

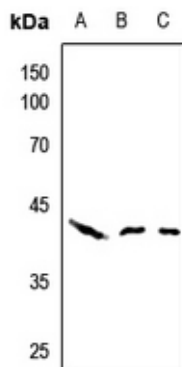
Protein Information

Name	AHSA1
Synonyms	C14orf3
Function	Acts as a co-chaperone of HSP90AA1 (PubMed: 29127155). Activates the ATPase activity of HSP90AA1 leading to increase in its chaperone activity (PubMed: 29127155). Competes with the inhibitory co- chaperone FNIP1 for binding to HSP90AA1, thereby providing a reciprocal regulatory mechanism for chaperoning of client proteins (PubMed: 27353360). Competes with the inhibitory co-chaperone TSC1 for binding to HSP90AA1, thereby providing a reciprocal regulatory mechanism for chaperoning of client proteins (PubMed: 29127155).
Cellular Location	Cytoplasm, cytosol. Endoplasmic reticulum. Note=May transiently interact with the endoplasmic reticulum
Tissue Location	Expressed in numerous tissues, including brain, heart, skeletal muscle and kidney and, at lower levels, liver and placenta.

Background

KLH-conjugated synthetic peptide encompassing a sequence within the center region of human AHA1. The exact sequence is proprietary.

Images



Western blot analysis of AHA1 expression in HEK293T (A), HeLa (B), U2OS (C) whole cell lysates.

Please note: All products are 'FOR RESEARCH USE ONLY. NOT FOR USE IN DIAGNOSTIC OR THERAPEUTIC PROCEDURES'.