

Anti-Tetraspanin 9 Antibody

Rabbit polyclonal antibody to Tetraspanin 9

Catalog # AP59803

Product Information

Application	WB
Primary Accession	O75954
Reactivity	Human, Mouse, Rat, SARS
Host	Rabbit
Clonality	Polyclonal
Calculated MW	26779

Additional Information

Gene ID	10867
Other Names	NET5; Tetraspanin-9; Tspan-9; Tetraspan NET-5
Target/Specificity	KLH-conjugated synthetic peptide encompassing a sequence within the center region of human Tetraspanin 9. The exact sequence is proprietary.
Dilution	WB~~WB (1/500 - 1/1000)
Format	Liquid in 0.42% Potassium phosphate, 0.87% Sodium chloride, pH 7.3, 30% glycerol, and 0.09% (W/V) sodium azide.
Storage	Store at -20 °C.Stable for 12 months from date of receipt

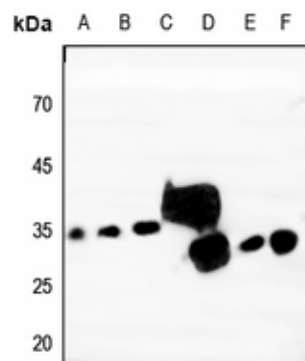
Protein Information

Name	TSPAN9
Synonyms	NET5
Cellular Location	Membrane; Multi-pass membrane protein. Note=Colocalizes with GP6 in tetraspanin microdomains on the platelet surface.
Tissue Location	Expressed in megakaryocytes and platelets (at protein level).

Background

KLH-conjugated synthetic peptide encompassing a sequence within the center region of human Tetraspanin 9. The exact sequence is proprietary.

Images



Western blot analysis of Tetraspanin 9 expression in HEK293T (A), HeLa (B), HGC27 (C), mouse kidney (D), rat lung (E), rat kidney (F) whole cell lysates.

Please note: All products are 'FOR RESEARCH USE ONLY. NOT FOR USE IN DIAGNOSTIC OR THERAPEUTIC PROCEDURES'.