

# Anti-FGL2 Antibody

Rabbit polyclonal antibody to FGL2

Catalog # AP59804

## Product Information

---

<b>Application</b>	WB
<b>Primary Accession</b>	<a href="#">Q14314</a>
<b>Reactivity</b>	Human, Mouse, Rat
<b>Host</b>	Rabbit
<b>Clonality</b>	Polyclonal
<b>Calculated MW</b>	50229

## Additional Information

---

<b>Gene ID</b>	10875
<b>Other Names</b>	Fibroleukin; Fibrinogen-like protein 2; pT49
<b>Target/Specificity</b>	KLH-conjugated synthetic peptide encompassing a sequence within the N-term region of human FGL2. The exact sequence is proprietary.
<b>Dilution</b>	WB~~WB (1/500 - 1/1000)
<b>Format</b>	Liquid in 0.42% Potassium phosphate, 0.87% Sodium chloride, pH 7.3, 30% glycerol, and 0.09% (W/V) sodium azide.
<b>Storage</b>	Store at -20 °C.Stable for 12 months from date of receipt

## Protein Information

---

<b>Name</b>	FGL2
<b>Function</b>	May play a role in physiologic lymphocyte functions at mucosal sites.
<b>Cellular Location</b>	Secreted.
<b>Tissue Location</b>	Constitutively expressed in cytotoxic T-cells.

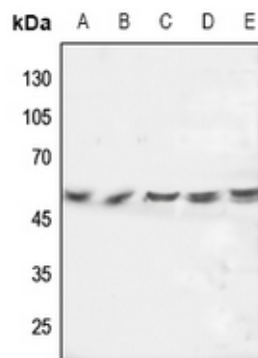
## Background

---

KLH-conjugated synthetic peptide encompassing a sequence within the N-term region of human FGL2. The exact sequence is proprietary.

## Images

---



Western blot analysis of FGL2 expression in A375 (A), DLD (B), mouse spleen (C), rat brain (D), rat spleen (E) whole cell lysates.

Please note: All products are 'FOR RESEARCH USE ONLY. NOT FOR USE IN DIAGNOSTIC OR THERAPEUTIC PROCEDURES'.