

Anti-RAB35 Antibody

Rabbit polyclonal antibody to RAB35

Catalog # AP59806

Product Information

Application	WB
Primary Accession	Q15286
Other Accession	Q6PHN9
Reactivity	Human, Mouse, Rat, Bovine
Host	Rabbit
Clonality	Polyclonal
Calculated MW	23025

Additional Information

Gene ID	11021
Other Names	RAB1C; RAY; Ras-related protein Rab-35; GTP-binding protein RAY; Ras-related protein Rab-1C
Target/Specificity	KLH-conjugated synthetic peptide encompassing a sequence within the center region of human RAB35. The exact sequence is proprietary.
Dilution	WB~~WB (1/500 - 1/1000)
Format	Liquid in 0.42% Potassium phosphate, 0.87% Sodium chloride, pH 7.3, 30% glycerol, and 0.09% (W/V) sodium azide.
Storage	Store at -20 °C.Stable for 12 months from date of receipt

Protein Information

Name	RAB35 (HGNC:9774)
Synonyms	RAB1C, RAY
Function	The small GTPases Rab are key regulators of intracellular membrane trafficking, from the formation of transport vesicles to their fusion with membranes. Rabs cycle between an inactive GDP-bound form and an active GTP-bound form that is able to recruit to membranes different sets of downstream effectors directly responsible for vesicle formation, movement, tethering and fusion (PubMed: 30905672). RAB35 is involved in the process of endocytosis and is an essential rate- limiting regulator of the fast recycling pathway back to the plasma membrane (PubMed: 21951725). During cytokinesis, required for the postfurlowing terminal steps, namely for intercellular bridge stability and abscission, possibly by controlling phosphatidylinositol 4,5-bis phosphate (PIP2) and SEPT2 localization at the

intercellular bridge (PubMed:[16950109](#)). May indirectly regulate neurite outgrowth. Together with TBC1D13 may be involved in regulation of insulin-induced glucose transporter SLC2A4/GLUT4 translocation to the plasma membrane in adipocytes (By similarity).

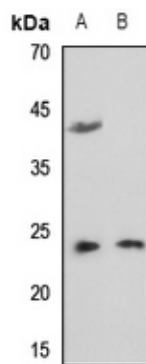
Cellular Location

Cell membrane; Lipid-anchor; Cytoplasmic side. Membrane, clathrin-coated pit. Cytoplasmic vesicle, clathrin-coated vesicle. Endosome. Melanosome. Note=Present on sorting endosomes and recycling endosome tubules (PubMed:16950109). Tends to be enriched in PIP2-positive cell membrane domains (PubMed:16950109). During mitosis, associated with the plasma membrane and present at the ingressing furrow during early cytokinesis as well as at the intercellular bridge later during cytokinesis (PubMed:16950109). Identified in stage I to stage IV melanosomes (PubMed:17081065). Colocalizes with ACAP2 and RUSC2 at the membrane protrusions of HEK293T cells (PubMed:30905672)

Background

KLH-conjugated synthetic peptide encompassing a sequence within the center region of human RAB35. The exact sequence is proprietary.

Images



Western blot analysis of RAB35 expression in mouse liver (A), rat liver (B) whole cell lysates.

Please note: All products are 'FOR RESEARCH USE ONLY. NOT FOR USE IN DIAGNOSTIC OR THERAPEUTIC PROCEDURES'.